

# Phase Shifters - Mechanical

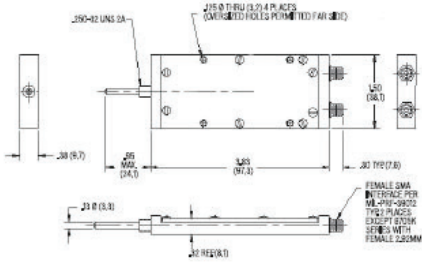


## High-Performance, Trough Line

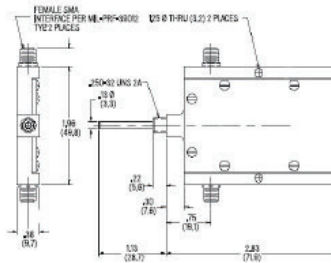
- SMA and 2.92 mm connectors
- Military-grade materials and processing
- Power: Average 100 watts / Peak 1000 watts

## High Frequency, Optical

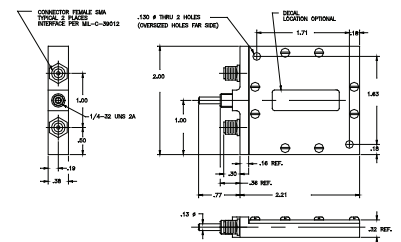
- 2.4 mm Connectors, 2.92 mm Connectors
- Precision micrometer head adjustment for enhanced resolution and setting accuracy



6705, 6705K model

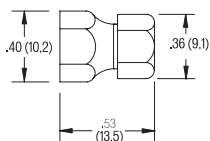


6605 model

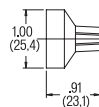


6805 model

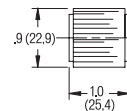
### (-1) Shaft Lock

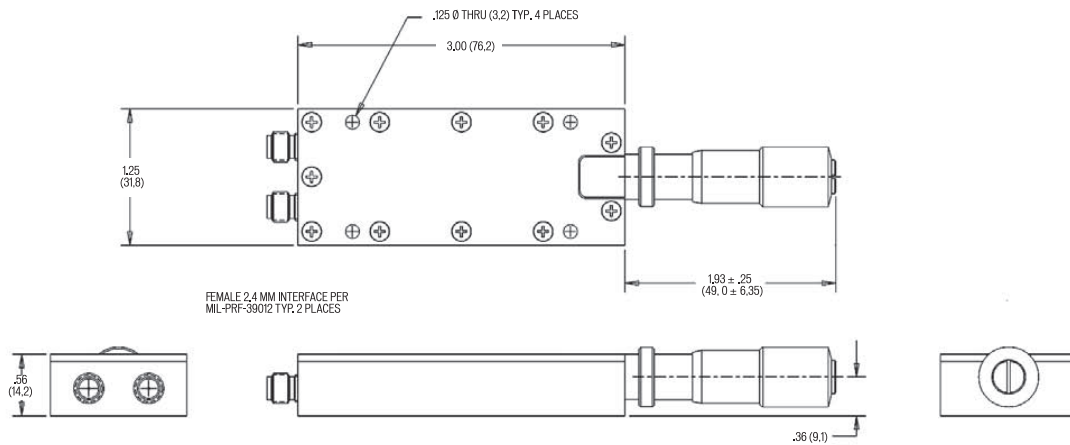


### (-2) Turns Counter with Shaft Lock



### (-5) Control Knob





Part Number*	Frequency (GHz)	Phase Shift Min. (°/GHz)	Phase Shift Min (°/GHz/Shaft Turn)	Insertion Phase Nom. @ Min. Phase Seeting (°/GHz)	Time Delay Nom. @ Min. Phase Setting (nsec.)	Notes
6605	DC-18	40	1.5	140	0.40	Base Model
6605-1	DC-18	40	1.5	140	0.40	Base Model + shaft lock
6605-4	DC-18	40	1.5	140	0.40	Base Model + screw driver slot
6605-5	DC-18	40	1.5	140	0.40	Base Model + control knob
6605-14	DC-18	40	1.5	140	0.40	Base Model + shaft lock with screw driver slot
6605-15	DC-18	40	1.5	140	0.40	Base Model + shaft lock with control knob
6705	DC-18	40	1.5	140	0.40	Base Model
6705-1	DC-18	40	1.5	140	0.40	Base Model + shaft lock
6705-2	DC-18	40	1.5	140	0.40	Base Model + turns counter with built in shaft lock
6704-4	DC-18	40	1.5	140	0.40	Base Model + screw driver slot
6705-5	DC-18	40	1.5	140	0.40	Base Model + control knob
6705-14	DC-18	40	1.5	140	0.40	Base Model + shaft lock with screw driver slot
6705-15	DC-18	40	1.5	140	0.40	Base Model + shaft lock with control knob
6805	DC-18	40	1.5	140	0.40	Base Model
6805-1	DC-18	40	1.5	150	0.40	Base Model + Shaft lock
6805-2	DC-18	40	1.5	150	0.40	Base Model + turns counter with built in shaft lock
6805-4	DC-18	40	1.5	150	0.40	Base Model + screw driver slot
6805-5	DC-18	40	1.5	150	0.40	Base Model + control knob
6805-14	DC-18	40	1.5	150	0.40	Base Model + shaft lock with screw driver slot
6805-15	DC-18	40	1.5	150	0.40	Base Model + shaft lock with control knob
6705K	DC-26.5	40	1.5	150	0.40	Base Model
6705K-1	DC-26.5	40	1.5	130	0.40	Base Model + shaft lock
6705K-2	DC-26.5	40	1.5	150	0.40	Base Model + turns counter with built in shaft lock
6705K-4	DC-26.5	40	1.5	150	0.40	Base Model + screw driver slot
6705K-5	DC-26.5	40	1.5	150	0.40	Base Model + control knob
6705K-14	DC-26.5	40	1.5	150	0.40	Base Model + shaft lock with screw driver slot
6705K-15	DC-26.5	40	1.5	150	0.40	Base Model + shaft lock with control knob
OPS-002	DC-40	40	1.5	150	0.40	2.4mm connectors, no options available
OPS-002K	DC-40	40	1.6	190	0.40	K connectors, no options available