

RF AMPLIFIER

MODEL BXMP1037

Available as: BXMP1037, SMA Connectorized Housing
 WNMP1037, 10 Pin 0.625" Sq Surface Mount (SG4)
 ** Special Pinout for the WNMP1037 package **

Features

- High Third Intercept: +45 dBm Typical
- High Output Power: +31 dBm Typical
- Operating Temp. -20 °C to +70 °C
- Environmental Screening Available

Specifications

CHARACTERISTIC	TYPICAL Ta = 25 °C	MIN/MAX Ta = -20 °C to +70 °C
Frequency	1000 - 2000 MHz	1000 - 2000 MHz
Gain (dB)	19.0	17.0
Power @ 1 dB Comp. (dBm)	+31	+30 Min.
Reverse Isolation (dB)	-24	-23 Max.
VSWR In Out	1.5:1 1.5:1	2.0:1 Max. 2.0:1 Max.
Noise Figure (dB)	5.0	6.0 Max.
Power Vdc mA	+15 450	+15 500 Max.

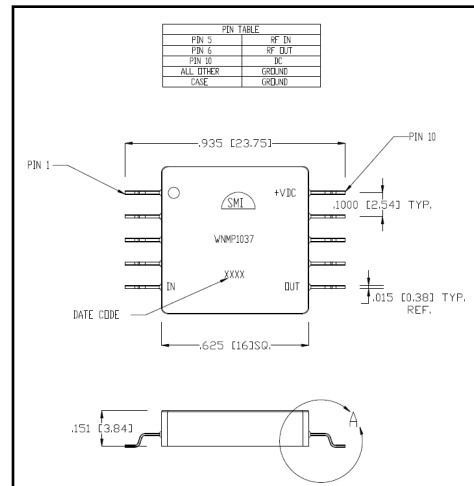
Note: Care should always be taken to effectively ground the case of each unit.
 Revision 12/12/2012

Typical Intermodulation Performance at 25 °C

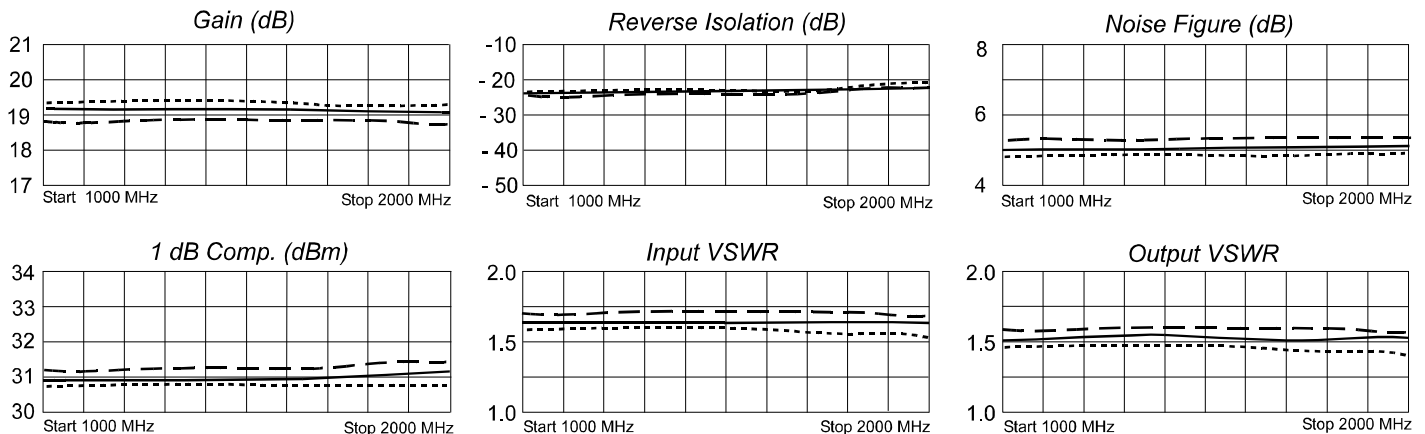
Second Order Harmonic Intercept Point+60 dBm (Typ.)
 Second Order Two Tone Intercept Point+54 dBm (Typ.)
 Third Order Two Tone Intercept Point+45 dBm (Typ.)

Maximum Ratings

Ambient Operating Temperature -55°C to +100 °C
 Storage Temperature -62°C to +125 °C
 Case Temperature +125 °C
 DC Voltage +18 Volts
 Continuous RF Input Power +20 dBm
 Short Term RF Input Power 50 Milliwatts (1 Minute Max.)
 Maximum Peak Power 0.5 Watt (3 µsec Max.)



Typical Performance Data



Legend ——— +25 °C - - - +70 °C ····· -20 °C



Spectrum Microwave · 2144 Franklin Drive N.E. · Palm Bay, Florida 32905 · PH (888) 553-7531 · Fax (888) 553-7532

www.SpectrumMicrowave.com Spectrum Microwave · 2707 Black Lake Place · Philadelphia, Pennsylvania 19154 · PH (215) 464-4000 · Fax (215) 464-4001

Instructions

Grounding Instructions	Care should be taken to effectively ground each unit.
Revisions	API reserves the right to make revisions to both product and/or the information contained within their datasheets without advanced notice.
Min./Max. Values	Specifications are guaranteed when tested in a 50 Ω (ohm) system.
Typical performance graphs and values are measured at 25°C, but not guaranteed.	

Outline Drawing

(For Reference Only)

