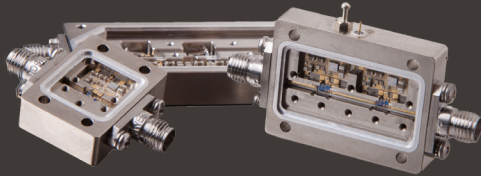


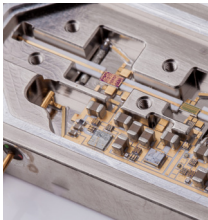
# High Frequency Broadband Amplifiers

Configurable without additional engineering charges.



## Fully Customizable Microwave Amplifiers

- Small Compact Size
- Internal Voltage Regulators
- High Performance Designs



- API offers a complete line of High Frequency Amplifiers from 2 GHz to 45 GHz
- NRE charges are not required to customize these high performance designs
- Standard internal voltage regulator allows for a wider selection of available power supplies
- Learn more on the API Technologies website: [micro.apitech.com/high-frequency-amplifiers](http://micro.apitech.com/high-frequency-amplifiers)

Model #	Frequency (GHz)	Gain (dB)	Noise Figure (dB)	P1dB Comp (dBm)	IP3 (dBm)	IP2 (dBm)	Supply Voltage (dc)	Supply Current (mA)
QB-992	.100 - 10 GHz	15	4	21	33	40	12	200
BXHF1176	.100 - 20 GHz	12	4.0	27	36	44	12 - 15	250
QB-969	.500 - 10 GHz	15	4.0	20	30	37	10	200
BXHF1174	.500 - 10 GHz	15	4.0	20	30	38	10 - 15	200
BXHF1057	2 - 8 GHz	16	1.8	17	23	30	12	70
BXHF1058	2 - 8 GHz	22.5	2.5	20	25	33	12	230
BXHF1059	2 - 8 GHz	32	1.8	17	23	30	12	135
BXHF1092	2 - 10 GHz	15	4.0	20	27	34	5	200
BXHF1064	2 - 10 GHz	15	4.0	20	27	34	12 - 15	200
BXHF1081	2 - 10 GHz	16	1.5	17	23	31	12	65
BXHF1065	2 - 12 GHz	22.5	3.0	9	18	27	12 - 15	100
QB-968	2 - 18 GHz	24	3.0	16	28	35	12	120
QB-991	2 - 20 GHz	14	4.0	17	31	38	12	140

CONTINUED ON PAGE TWO

(Typical Performance at 25C)

Model #	Frequency (GHz)	Gain (dB)	Noise Figure (dB)	P1dB Comp (dBm)	IP3 (dBm)	IP2 (dBm)	Supply Voltage (dc)	Supply Current (mA)
BXHF1067	2 - 20 GHz	25	3.5	17	27	33	12 - 15	150
BXHF1084	2 - 20 GHz	26	3.5	17	27	33	12 - 15	150
QB-919	4 - 6 GHz	7.5	5.0	20	25	30	12	110
QB-917	4 - 8 GHz	16	1.8	17	23	30	12	55
QB-920	4 - 8 GHz	22.5	2.0	.0	25	32	12	165
QB-921	4 - 8 GHz	32	1.8	17	23	30	12	110
BXHF1060	4 - 8 GHz	40	1.8	17	25	31	12 - 15	220
QB-922	4 - 8 GHz	40	1.8	20	25	32	12	220
BXHF1082	5 - 15 GHz	30	2.5	20	26	32	12 - 15	150
BXHF1083	5 - 15 GHz	12	3.8	26	40	46	12 - 15	370
BXHF1085	5 - 20 GHz	20	4.0	23	32	38	12 - 15	450
BXHF1086	5 - 20 GHz	9	4.2	25	35	42	12 - 15	365
BXHF1062	6 - 10 GHz	20	6.5	19	31	38	5	120
BXHF1063	6 - 10 GHz	22	2.0	10	22	29	5	125
BXHF1061	6 - 10 GHz	8	5.0	25	35	43	12 - 15	250
BXHF1090	6 - 10 GHz	22	2.0	13	25	-	12 - 15	125
BXHF1091	6 - 10 GHz	20	6.5	19	31	38	12 - 15	120
BXHF1089	6 - 12 GHz	20	7.0	19	30	39	12 - 15	125
BXHF1065	6 - 12 GHz	22.5	3.0	9	18	27	12 - 15	100
BXHF1066	6 - 12 GHz	20	7.0	19	29	38	5	125
BXHF1087	6 - 12 GHz	22.5	3.0	9	18	27	5	150
QB-947	6 - 12 GHz	22.5	3.0	9	20	27	9	96
QB-972	10 - 12 GHz	20	7.0	19	30	37	5	125
BXHF1071	10 - 20 GHz	25	3.8	16	26	35	12	150
BXHF1068	17 - 27 GHz	45	4.5	27.5	35	55	12	900
QB-945	19 - 27 GHz	45	4.5	28	36	43	12	800
BXHF1075	43 - 44 GHz	31	5.0	17	27	37	12 - 15	300
BXHF1079	0.1 - 25 GHz	12	6.0	27	40	45	12 to 15	250

CONTINUED ON PAGE THREE  
(Typical Performance at 25C)

Model #	Frequency (GHz)	Gain (dB)	Noise Figure (dB)	P1dB Comp (dBm)	IP3 (dBm)	IP2 (dBm)	Supply Voltage (dc)	Supply Current (mA)
BXHF1088	6 - 12 GHz	22.5	3.0	9	18	27	12 to 15	100
BXHF1104	2 - 18 GHz	9	4.5	20	35	40	12 to 15	100
BXHF1198	8 - 12 GHz	30	2.8	15	26	31	12	150
BXHF1199	8 - 12 GHz	29	5.0	27	33	38	12	450
BXHF1200	35 - 45 GHz	34	5.0	17	27	37	12 to 15	300
BXHF1201	10 - 18 GHz	12	3.5	25	10	46	12 to 15	370
BXHF1202	8 - 12 GHz	27	3.0	24	30	35	12 to 15	450
TN9560	0.5 - 6 GHz	19	3.5	20	30	45	15	140
CONTINUED FROM PAGE TWO (Typical Performance at 25C)								