

RF AMPLIFIER

Available as: QB-968, SMA Connectorized Housing (080-22930)

MODEL QB-968

Preliminary

Features

- Ultra Broadband Amplifier
- High Gain: 24 dB Typical
- Low Noise Figure: 3 dB Typical
- High Reverse Isolation
- Single Supply Operation (Other Supply Voltages Available)

Absolute Maximum (No Damage) Ratings

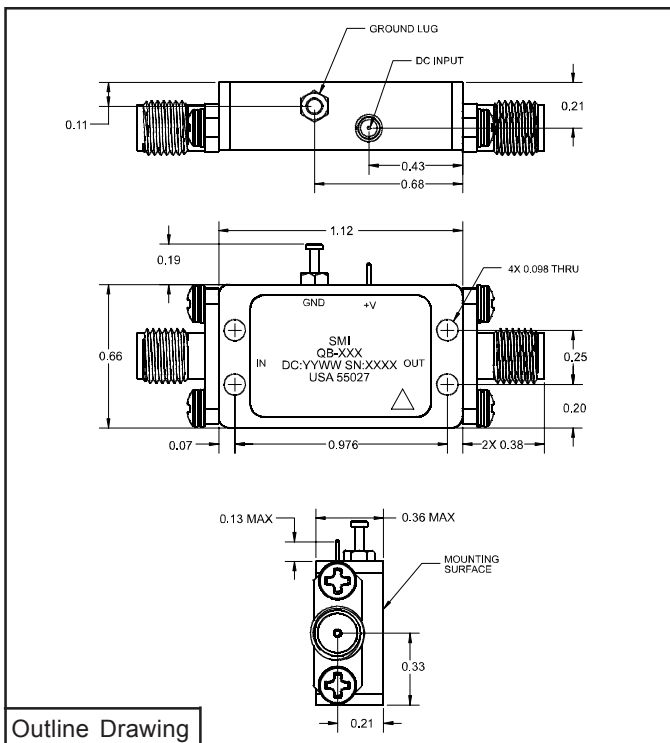
Ambient Operating Temperature -40°C to +85
 Storage Temperature -65°C to +125 °C
 DC Voltage +16 Volts
 RF Input Power (CW)² +20 dBm

Specifications¹

CHARACTERISTIC	TYPICAL	MIN/MAX
	Ta= 25 °C	Ta = -40 °C to +85 °C
Frequency	2 - 18 GHz	2 - 18 GHz
Gain (dB)	24	23 / 25
Gain var. Over Temp. (dB)	+0.3 / -1.2	+1.0 / -2.0
Gain Flatness (dB)	±0.8	±1.0 Max.
Reverse Isolation (dB)	70	45 Min.
VSWR	In	2.0:1 Max.
	Out	2.0:1 Max.
Output Power @ 1 dB Compression (dBm)	+16	+13.5 Min.
Noise Figure (dB)	3.0	5.0 Max.
Output Intercept Point (dBm)		
3rd Order	+28	+25 Min.
Power	Vdc	+12
	mA	120
		130 Max.

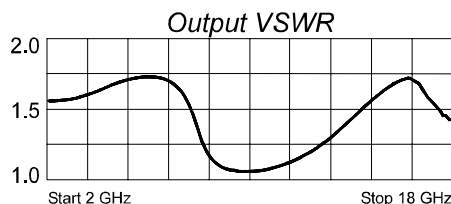
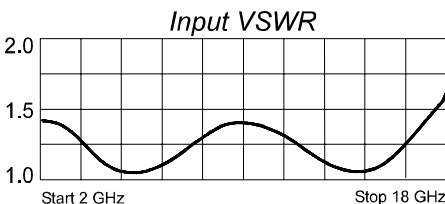
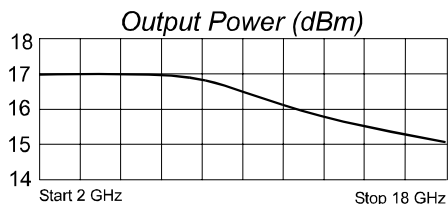
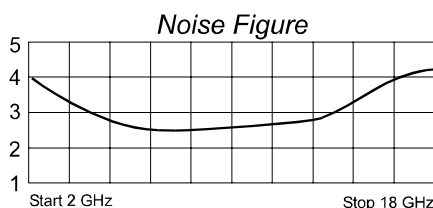
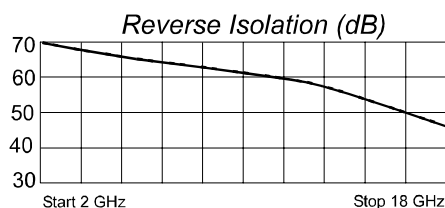
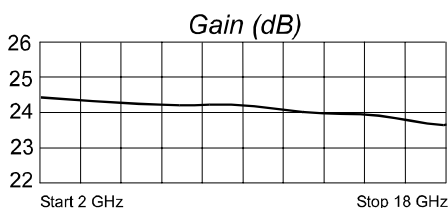
Notes:

1. All specification ratings are based on measurements in a 50 ohm system with a DC supply voltage tolerance of ±1%.
2. RF output terminated into 50 ohms.



Outline Drawing

Typical Performance Data



Legend ——— +25 °C



Spectrum Microwave · 2144 Franklin Drive N.E. · Palm Bay, Florida 32905 · PH (888) 553-7531 · Fax (888) 553-7532 Rev. 5/13/10

www.SpectrumMicrowave.com Spectrum Microwave · 2707 Black Lake Place · Philadelphia, Pennsylvania 19154 · PH (215) 464-4000 · Fax (215) 464-4001