

RF AMPLIFIER

Available as: QB-992, SMA Connectorized Housing (080-22930)

MODEL QB-992

Preliminary

Features

- Ultra Broadband Amplifier with 15 db of Gain (Typical)
- Noise Figure: 4 dB Typical
- Moderate Output Power: +21 dBm Typical
- Single Supply Operation (Other Supply Voltages Available)

Absolute Maximum (No Damage) Ratings

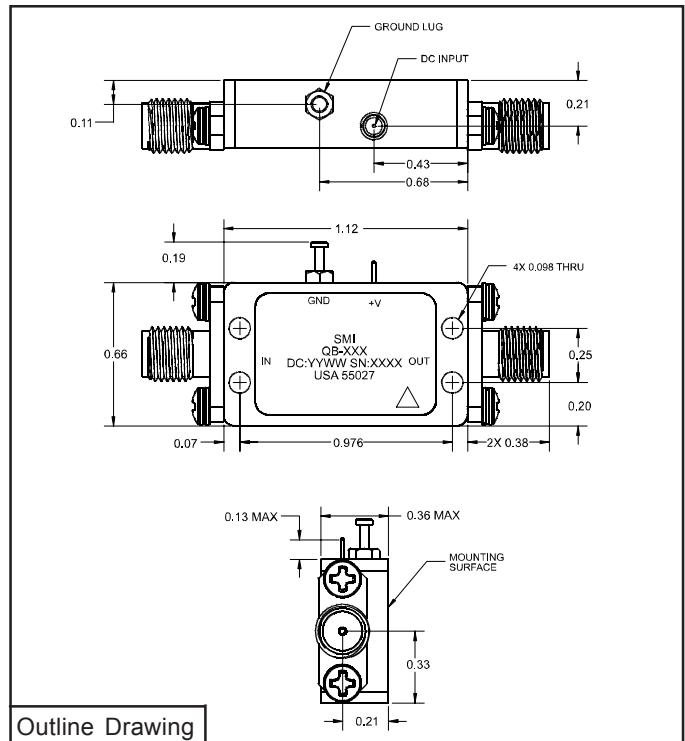
Ambient Operating Temperature -40°C to +85
 Storage Temperature -65°C to +125 °C
 DC Voltage +16 Volts
 RF Input Power (CW)² +17 dBm

Specifications¹

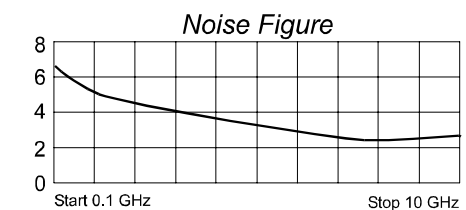
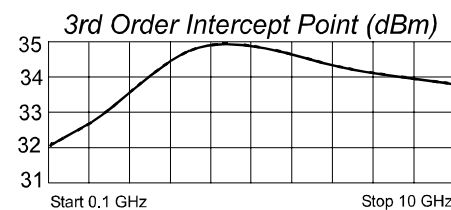
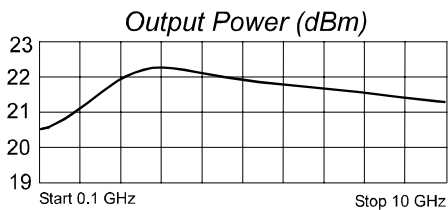
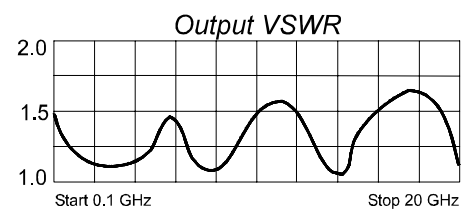
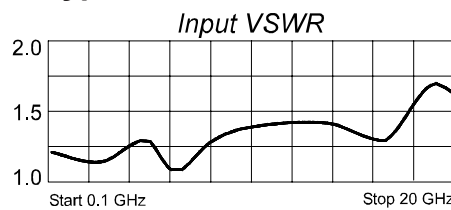
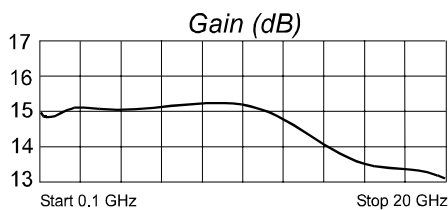
CHARACTERISTIC	TYPICAL Ta= 25 °C	MIN/MAX Ta = 25 °C
Frequency	0.1 - 10 GHz	0.1 - 10 GHz
Gain (dB)	15	14 / 16
Gain var. Over Temp. (dB)	+0.4 / -0.4	+0.7 / -0.7
Gain Flatness (dB)	±0.4	±1.0 Max.
Reverse Isolation (dB)	40	32 Min.
VSWR	In 1.3:1 Out 1.4:1	2.0:1 Max. 2.0:1 Max.
Output Power @ 1 dB Compression (dBm)	+21	+19 Min.
Noise Figure (dB)	4.0	7.0 Max.
Output Intercept Point (dBm) 3rd Order	+33	+30 Min.
Power	Vdc +12 mA 200	+12 215 Max.

Notes:

1. All specification ratings are based on measurements in a 50 ohm system with a DC supply voltage tolerance of ±1%.
2. RF output terminated into 50 ohms.



Typical Performance Data



Legend ——— +25 °C



Spectrum Microwave · 2144 Franklin Drive N.E. · Palm Bay, Florida 32905 · PH (888) 553-7531 · Fax (888) 553-7532 Rev. 5/25/10

www.SpectrumMicrowave.com Spectrum Microwave · 2707 Black Lake Place · Philadelphia, Pennsylvania 19154 · PH (215) 464-4000 · Fax (215) 464-4001