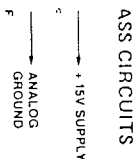


SPECIFICATIONS

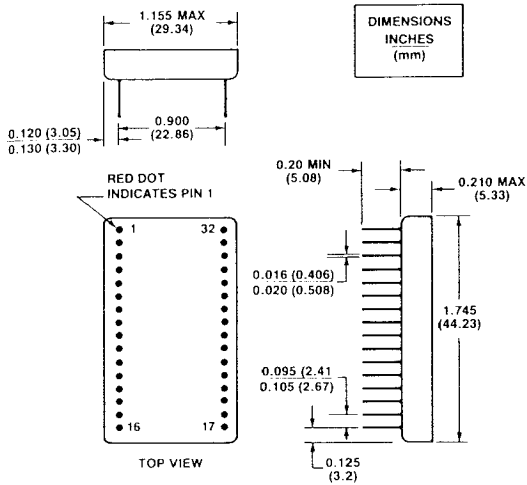
(Typical @ +25°C and nominal supply voltages)

MODEL	HS9516C-6	HS9516C-5	HS9516C-4	HS9516B-6	HS9516B-5	HS9516B-4
ANALOG INPUT						
Nominal Input Voltage Ranges	5V, 10V, 20V, ±2.5V, ±5V, ±10V
Absolute Max Input Voltage	±25V
Input Impedance	2.5KΩ on 5V ranges, 5KΩ on 10V ranges, 10KΩ on 20V ranges
Input Circuitry Settling Time	20μsec for full rated accuracy after FSR analog change
DIGITAL OUTPUTS						
Data Coding	
Unipolar	16-bits binary
Bipolar	Offset binary, 2's complement
Status Output	'H' = conversion in process; goes low 50nsec before LSB is stable
Logic '1' Voltage	2.4V min to 5V
Logic '0' Voltage	0V min to 0.4V max
Max Loading	2 std TTL loads, each output
DIGITAL INPUTS						
Start Convert	Positive pulse, 50nsec min width, initiates conversion on trailing edge. Must remain low during conversion.
Short Cycle	'H' enables conversion. Must be tied to logic supply for 16-bit conversion and to bit N + 1 for N bit conversion.
Logic '1' Voltage	2V min to 5.5V max
Logic '0' Voltage	-0.5V min to 0.8V max
Loading	1 LPTTL load max each input
POWER REQUIREMENTS						
+15V Supply Range	+15V ±10%
+15V Supply Current	30mA max
-15V Supply Range	-15V ±10%
-15V Supply Current	30mA max
+5V Supply Range	+5V ±10%
+5V Supply Current	60mA max
Total Power Dissipation	1.2W max
REFERENCE OUTPUT						
Voltage	+10V ±10%
Output Resistance	0.1Ω
Max Loading	±1mA
ACCURACY						
Quantization	±½ LSB
Scale Factor Error	±0.1% max ¹
Zero Error (Unipolar or Bipolar)	±0.1% FSR max ¹
Differential Linearity Error (% of FSR, max)	±0.0015	±0.003 15 bits	±0.006 14 bits	±0.0015 14 bits	±0.003 **	±0.006 **
No Missing Codes ²	16 bits
Integral Linearity Error (% of FSR, max)	±0.0008 typ ±0.0015 max	±0.0015 ±0.003	±0.003 ±0.006	±0.0008 typ ±0.0015 max	±0.0015 ±0.003	±0.003 ±0.006
Noise (2σ-p, RTI)	½ LSB
CONVERSION TIME²						
	100μsec max
STABILITY						
Scale Factor Tempco	±10ppm/°C max
Zero Tempco	
Unipolar	±2ppm FSR/°C
Bipolar	±5ppm FSR/°C
Integral Linearity Tempco	±1ppm FSR/°C max
Differential Linearity	±0.5ppm FSR/°C max
Change in Absolute Accuracy with Change in Power Supply Voltages	
+15V	0.002%/ΔV _S max
-15V	0.002%/ΔV _S max
+5V	0.002%/ΔV _S max
ENVIRONMENTAL LIMITS						
Operating Temp Range	0°C to +70°C	.	.	-55°C to +125°C	**	**
Storage Temp Range	-55°C to +85°C	.	.	-65°C to +150°C	**	**
PACKAGE	Case A	.	.	Case A	**	**

NOTES 1 Adjustable to zero. 2 Over full operating temperature range.
 * Specifications same as HS 9516C-6 ** Specifications same as HS 9516B-6



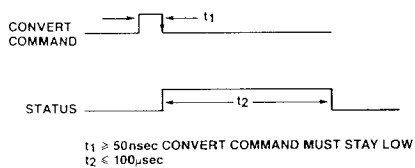
PACKAGE OUTLINE



PIN ASSIGNMENTS

PIN	FUNCTION	PIN	FUNCTION
1	START CONVERT	32	CLOCK RATE CONTROL
2	SHORT CYCLE	31	2 ⁻¹
3	+5V	30	STATUS OUT
4	2 ⁻⁸	29	2 ⁻⁹
5	2 ⁻⁷	28	2 ⁻¹⁰
6	2 ⁻⁶	27	2 ⁻¹¹
7	2 ⁻⁵	26	2 ⁻¹²
8	2 ⁻⁴	25	2 ⁻¹³
9	2 ⁻³	24	2 ⁻¹⁴
10	2 ⁻²	23	2 ⁻¹⁵
11	2 ⁻¹ (MSB)	22	2 ⁻¹⁶ (LSB)
12	DIG GND	21	+15V
13	BIPOLAR	20	ANA GND
14	10V INPUT	19	-15V
15	20V INPUT	18	GAIN ADJ
16	SUMMING JUNCTION	17	REF OUT

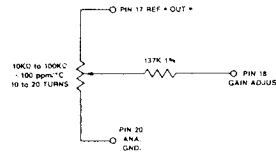
TIMING



PIN 2 CONNECTS TO	16-BIT +5V	15-BIT Pin 22	14-BIT Pin 23	13-BIT Pin 24	12-BIT Pin 25
SHORT CYCLE CONNECTIONS					

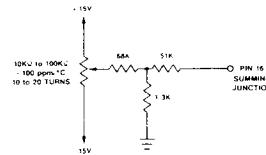
APPLICATIONS INFORMATION

OPTIONAL OFFSET AND GAIN ADJUSTMENTS



GAIN ADJUST CIRCUIT MIN ADJUST RANGE = $\pm 0.2\%$ FSR

Unipolar & Bipolar: Apply + F.S. $-3/2$ LSB analog input and set the potentiometer for a digital output that alternates between 111...1 and 111...0.



OFFSET ADJUST CIRCUIT MIN ADJUST RANGE = $\pm 0.2\%$ FSR

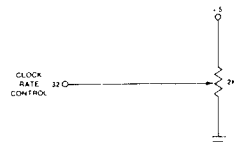
Unipolar: Apply $+1/2$ LSB analog input and set potentiometer for a digital output that alternates between 000...0 and 000...1.

Bipolar: Apply $+1/2$ LSB and set potentiometer for a digital output that alternates between 1000...0 and 1000...1.

CONNECTIONS FOR VARIOUS INPUT RANGES

INPUT RANGE	ANALOG IN TO PIN	CONNECT PIN 13 TO	NOTES
-2.5V to +2.5V	14	11	Connect pins 15 + 16
-5V to +5V	14	17	
-10V to +10V	15	11	Connect pins 15 + 16
0V to 5V	14	20	
0V to 10V	14	20	
0V to 20V	15	20	

CLOCK RATE CONTROL



ADJUSTMENT RANGE IS $50\mu\text{sec}$ to $200\mu\text{sec}$ at 16-BIT RESOLUTION

The HS 9516 clock rate is set by the factory for a conversion time of $100\mu\text{sec}$, i.e. Pin 32 left open. For higher or lower clock rates, connect Pin 32 to a multi-turn potentiometer as shown above.

GROUNDING AND POWER SUPPLY DECOUPLING

Connect Analog GND to Digital GND at package pins. If not possible, connect $1\mu\text{f}$ tantalum capacitor in parallel with a $0.1\mu\text{f}$ ceramic capacitor between Analog GND and Digital GND pins. Decouple +15V and -15V supplies to Analog GND and +5V supply to Digital GND at package pins with $1\mu\text{f}$ tantalum and $0.1\mu\text{f}$ ceramic capacitors.

*Non-polarized

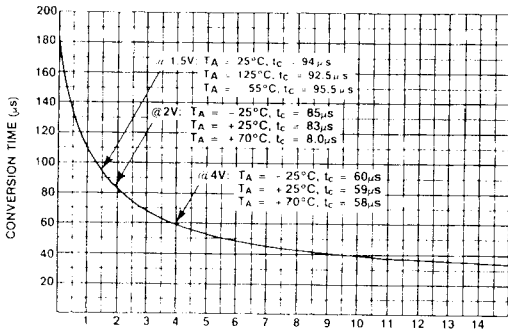
TRANSFER CHARACTERISTICS

MSB	LSB	BIPOLAR INPUT VOLTAGE RANGE			UNIPOLAR INPUT VOLTAGE RANGE		
		± 2.5	± 5V	± 10V	0 to 5V	0 to 10V	0 to 20V
11111111111111110 ³		2.49989V	5.99977V	9.99954V	4.99989V	9.99977V	19.99954V
00000000000000000		-0.038mV	-0.076mV	-0.153mV	2.49996V	4.99992V	9.99985V
00000000000000000		-2.49992V	-4.99982V	-9.99985V	-0.038mV	-0.076mV	-0.153mA

NOTES:

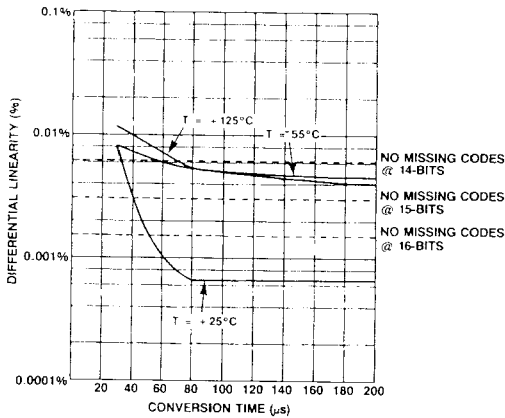
1. Codes shown are binary and offset binary. Use MSB for 2's complement coding. 2. One LSB = 4.882mV. 3. TA ranges given are theoretical values for the transitions indicated. Ideally, with the converter continuously converting the output bits indicated as 0 will change to 1, 1 to 0, 0 to 1, 1 to 0, 0 to 1, as the input voltage passes through the level indicated.

TYPICAL CHARACTERISTIC CURVES

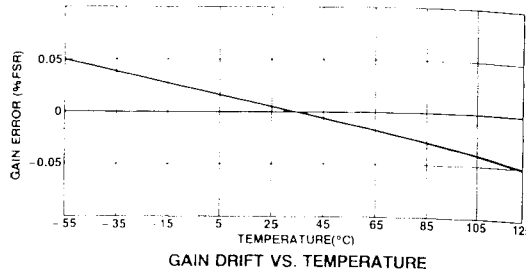


CONVERSION TIME VS. CONTROL VOLTAGE, $T_A = +25^\circ C$

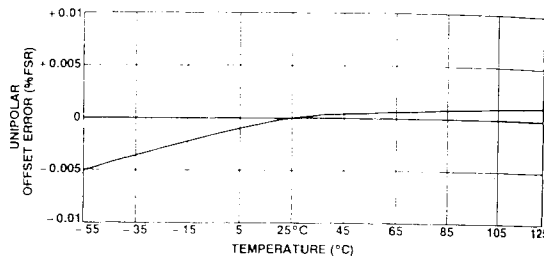
NOTE: CONVERSION TIME WILL BE 100 μs MAX IF VOLTAGE TO PIN 32 IS OPEN, AND TYPICALLY 200 μs IF PIN 32 IS AT 0V (GROUND).



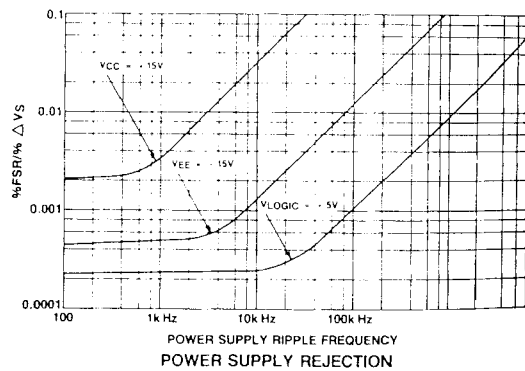
HS 9516-6 DIFFERENTIAL LINEARITY VS. CONVERSION TIME



GAIN DRIFT VS. TEMPERATURE



OFFSET DRIFT VS. TEMPERATURE



ORDERING INFORMATION

MODEL	DESCRIPTION
HS 9516C-6	16-Bit ADC with $\pm 0.001\%$ Integral Linearity, $0^\circ C$ to $70^\circ C$
HS 9516C-5	16-Bit ADC with $\pm 0.0015\%$ Integral Linearity, $0^\circ C$ to $70^\circ C$
HS 9516C-4	16-Bit ADC with $\pm 0.003\%$ Integral Linearity, $0^\circ C$ to $70^\circ C$
HS 9516B-6	16-Bit ADC with $\pm 0.001\%$ Integral Linearity, $-55^\circ C$ to $+125^\circ C$
HS 9516B-5	16-Bit ADC with $\pm 0.0015\%$ Integral Linearity, $-55^\circ C$ to $+125^\circ C$
HS 9516B-4	16-Bit ADC with $\pm 0.003\%$ Integral Linearity, $-55^\circ C$ to $+125^\circ C$