



**C750 SERIES**

**FEATURES**

- 6, 10, 20 & 30 dB Standard Coupling Values
- Models from 0.5 to 18.0 GHz
- SMA Connectors
- Meet MIL-E-5400 Class 3 or Equivalent
- Screenable to MIL-C-15370 or Equivalent

**SPECIFICATIONS**

Frequency (GHz)	Coupling (dB)	Flatness <sup>1</sup> (dB)	VSWR <sup>2</sup> max	Loss <sup>3</sup> max (dB)	Directivity		Model Number
					min (dB)		
0.5-1	6 ± 1	± .6	1.10	.15	25		C751-6
0.5-1	10 ± 1	± .75	1.10	.15	25		C751-10
0.5-1	20 ± 1	± .75	1.10	.15	25		C751-20
0.5-1	30 ± 1	± .75	1.10	.15	25		C751-30
1-2	6 ± 1	± .6	1.15	.2	25		C752-6
1-2	10 ± 1	± .75	1.15/1.10	.2	25		C752-10
1-2	20 ± 1	± .75	1.15/1.10	.2	25		C752-20
1-2	30 ± 1	± .75	1.15	.2	25		C752-30
1.3-2.6	6 ± 1	± .6	1.15	.2	24		C752E-6
1.3-2.6	10 ± 1	± .75	1.15	.2	24		C752E-10
1.3-2.6	20 ± 1	± .75	1.15	.2	24		C752E-20
1.3-2.6	30 ± 1	± .75	1.15	.2	24		C752E-30
2-4	6 ± 1	± .6	1.15	.2	22		C753-6
2-4	10 ± 1	± .75	1.15	.2	22		C753-10
2-4	20 ± 1	± .75	1.15	.2	22		C753-20
2-4	30 ± 1	± .75	1.15	.2	22		C753-30
2.6-5.2	6 ± 1	± .6	1.25	.25	20		C753E-6
2.6-5.2	10 ± 1	± .75	1.25	.25	20		C753E-10
2.6-5.2	20 ± 1	± .75	1.25	.25	20		C753E-20
4-8	6 ± 1	± .5	1.25	.25	18		C754-6
4-8	10 ± 1	± .5	1.25	.25	20		C754-10
4-8	20 ± 1	± .5	1.25	.25	20		C754-20
4-8	30 ± 1	± .5	1.25	.25	20		C754-30
4.8-9.6	6 ± 1	± .5	1.27	.35	18		C754E-6
4.8-9.6	10 ± 1	± .5	1.27	.35	18		C754E-10
4.8-9.6	20 ± 1	± .5	1.27	.35	18		C754E-20
4.8-9.6	30 ± 1	± .5	1.27	.35	18		C754E-30

NOTES: REFER TO PAGE 2



Frequency (GHz)	Coupling (dB)	Flatness <sup>1</sup> (dB)	VSWR <sup>2</sup> max	Loss <sup>3</sup> max (dB)	Directivity min (dB)	Model Number
7-12.4	6 ± 1	± .5	1.30	.5	15	C755-6
7-12.4	10 ± 1	± .5	1.30	.5	17	C755-10
7-12.4	20 ± 1	± .5	1.25	.5	17	C755-20
7-12.4	30 ± 1	± .5	1.25	.5	17	C755-30
12-18	6 ± 1	± .5	1.35/1.40	.8	15	C756-6
12-18	10 ± 1	± .5	1.35/1.40	.6	15	C756-10
12-18	20 ± 1	± .5	1.35/1.40	.6	15	C756-20
12-18	30 ± 1	± .5	1.35/1.40	.6	15	C756-30
6.5-18	6 ± 1	± .6	1.35/1.40	.8	15	C756E-6
6.5-18	10 ± 1	± .75	1.35/1.40	.6	15	C756E-10
6.5-18	20 ± 1	± .75	1.35/1.40	.6	15	C756E-20
6.5-18	30 ± 1	± .75	1.35/1.40	.6	15	C756E-30

**Power Handling:**

Average incident 100 W at 1 GHz

Average reflected Coupling (W)	(W)
-6	2
-10	5
-20	50
-30	50

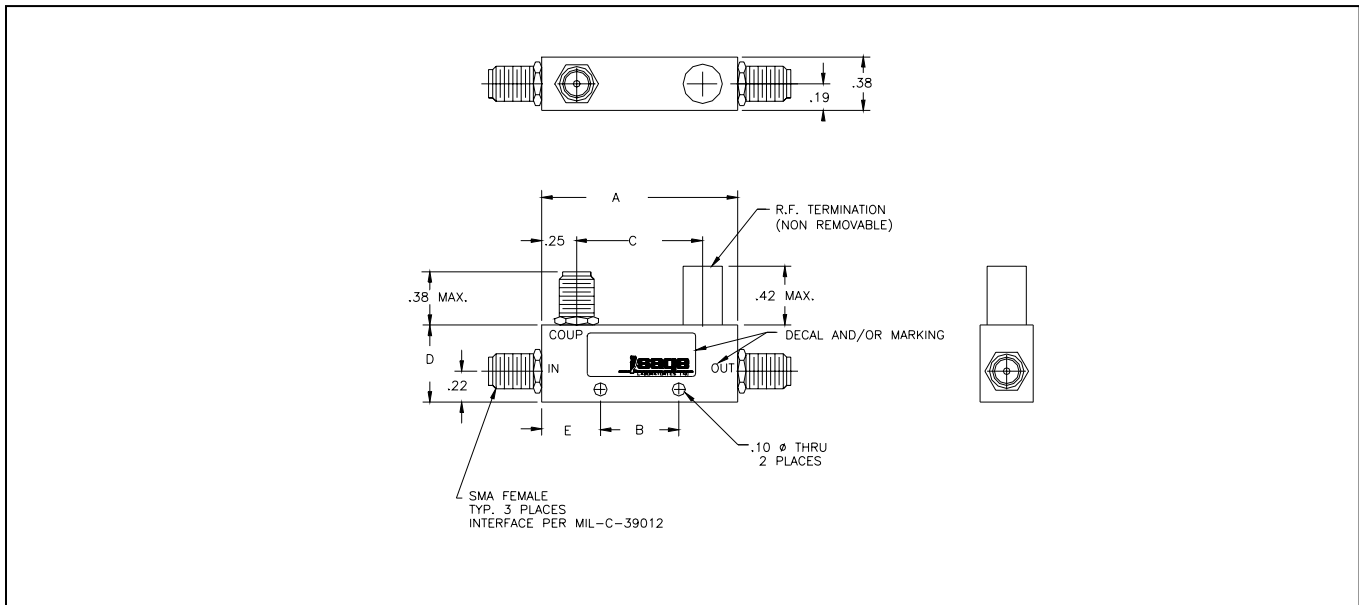
**Peak**

	(kW)
C751 through C754	3
C755 through C756	2

**NOTES:**

1. Flatness specifies the maximum coupling variation within the coupling range.
2. Dual-valve entries indicate primary/secondary VSWR.
3. Loss is the actual dissipated and reflected loss. It does NOT include coupling loss.

**OUTLINE DRAWING**



Model Numbers	Dimensions (See Drawing)								Weights			
	A"	A (cm)	B"	B (cm)	C"	C (cm)	D"	D (cm)	E"	E (cm)	Ounces	Grams
C751-6/10/20/30	3.00	(7,62)	1.00	(2,54)	2.50	(6,35)	.55	(1,40)	1.00	(2,54)	1.3	37
C752-6/10/20	1.78	(4,52)	.94	(2,39)	1.28	(3,25)	.50	(1,27)	.42	(1,07)	0.8	23
C752-30	1.78	(4,52)	.94	(2,39)	1.28	(3,25)	.55	(1,40)	.42	(1,07)	0.9	26
C752E-6/10/20	1.40	(3,57)	.57	(1,45)	.90	(2,27)	.50	(1,27)	.42	(1,07)	0.7	20
C752E-30	1.40	(3,57)	.57	(1,45)	.90	(2,27)	.55	(1,40)	.42	(1,07)	0.8	23
C753-6/10/20	1.16	(2,95)	.34	(0,86)	.66	(1,68)	.50	(1,27)	.41	(1,04)	0.6	17
C753-30	1.16	(2,95)	.34	(0,86)	.66	(1,68)	.55	(1,40)	.41	(1,04)	0.7	20
C753E-6/10/20	1.00	(2,54)	n/a	n/a	.50	(1,27)	.50	(1,27)	.50	(1,27)	0.6	17
C754-6/10/20	1.00	(2,54)	n/a	n/a	.50	(1,27)	.50	(1,27)	.50	(1,27)	0.6	17
C754-30	1.00	(2,54)	n/a	n/a	.50	(1,27)	.55	(1,40)	.50	(1,27)	0.7	20
C754E-6/10/20	1.00	(2,54)	n/a	n/a	.50	(1,27)	.50	(1,27)	.50	(1,27)	0.6	17
C754E-30	1.00	(2,54)	n/a	n/a	.50	(1,27)	.55	(1,40)	.50	(1,27)	0.7	20
C755-6	1.00	(2,54)	n/a	n/a	.50	(1,27)	.50	(1,27)	.50	(1,27)	0.6	17
C755-10/20/30	1.00	(2,54)	n/a	n/a	.50	(1,27)	.55	(1,40)	.50	(1,27)	0.7	20
C756-6	1.00	(2,54)	n/a	n/a	.50	(1,27)	.50	(1,27)	.50	(1,27)	0.6	17
C756-10/20/30	1.00	(2,54)	n/a	n/a	.50	(1,27)	.55	(1,40)	.50	(1,27)	0.7	20
C756E-6	1.00	(2,54)	n/a	n/a	.50	(1,27)	.50	(1,27)	.50	(1,27)	0.6	17
C756E-10/20/30	1.00	(2,54)	n/a	n/a	.50	(1,27)	.55	(1,40)	.50	(1,27)	0.7	20

MISCELLANEOUS:

1. Spectrum Microwave "Standard Warranty and Order Terms and Conditions" apply to all orders.
2. All specifications subject to change without notice.
3. Check "Ordering and Availability Listing" for delivery and ordering information.
4. Contact our local Manufacturers Representative for pricing.

Specification Revision - 070710

