

RF LIMITING AMPLIFIER

MODEL **BXL9653**

HousingStyle: SMA Connectorized Housing (H2L)
 Dimensions: 1.36" x 0.66" x 0.33" (Hermetic Laser Welded)

Features

- Compression Range: 40 dB Typical
- Low Phase Shift Variation
- Operating Temperature: -55 °C to +85 °C
- Environmental Screening Available

Maximum (No Damage) Ratings

Ambient Operating Temperature -55°C to + 100 °C
 Storage Temperature -62°C to + 125 °C
 Case Temperature + 125 °C
 DC Voltage.....+17 Volts
 Continuous RF Input Power..... +15 dBm

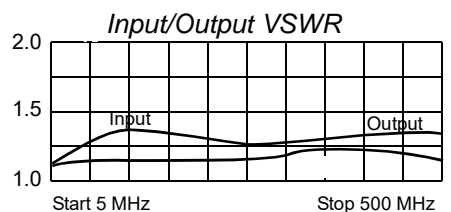
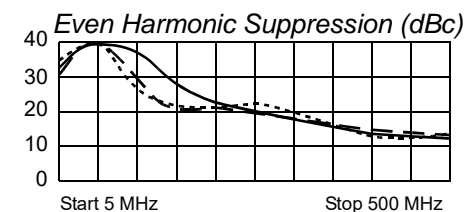
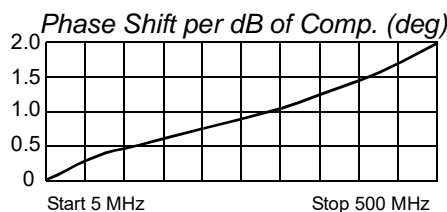
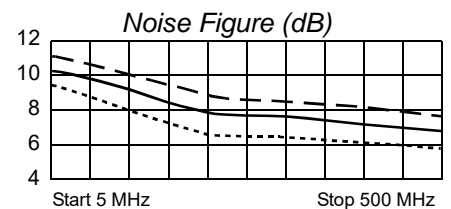
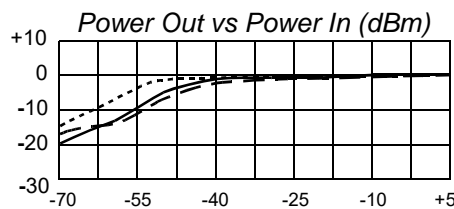
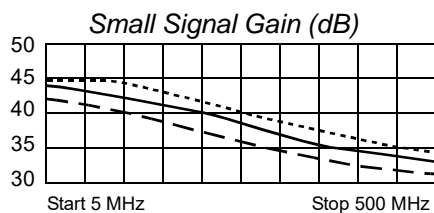
Specifications

CHARACTERISTIC	TYPICAL Ta = 25 °C	MIN/MAX Ta = -55 °C to +85 °C
Frequency	5 - 500 MHz	5 - 500 MHz
Small Signal Gain (dB)	>38	30 Min.
Saturated Power @ P _{IN} = 0 dBm (dBm)	-0.5	-4.0 Min.
Saturated Flatness @ P _{IN} = 0 dB	+/-0.8	+/-1.5 Max.
VSWR In Out	<1.25:1 <1.25:1	2.0:1 Max. 2.0:1 Max.
Phase Shift per dB of Comp. per MHz, (deg.)	0.0035	___ Min.
Even Harmonic Suppression @ P _{IN} = -33 to +10 dBm (dBc)	20	15 Max.
Noise figure (dB)	<8	11 Max.
Power Vdc mA	+15 60	+15 70 Max.

Revision: 4/7/2015: ENL .400" x .800" 20 Pin Surface-mount Package is no longer available

Note: Care should always be taken to effectively ground the case of each unit.

Typical Performance Data



Legend ——— + 25 °C - - - +85 °C - - - - -55 °C



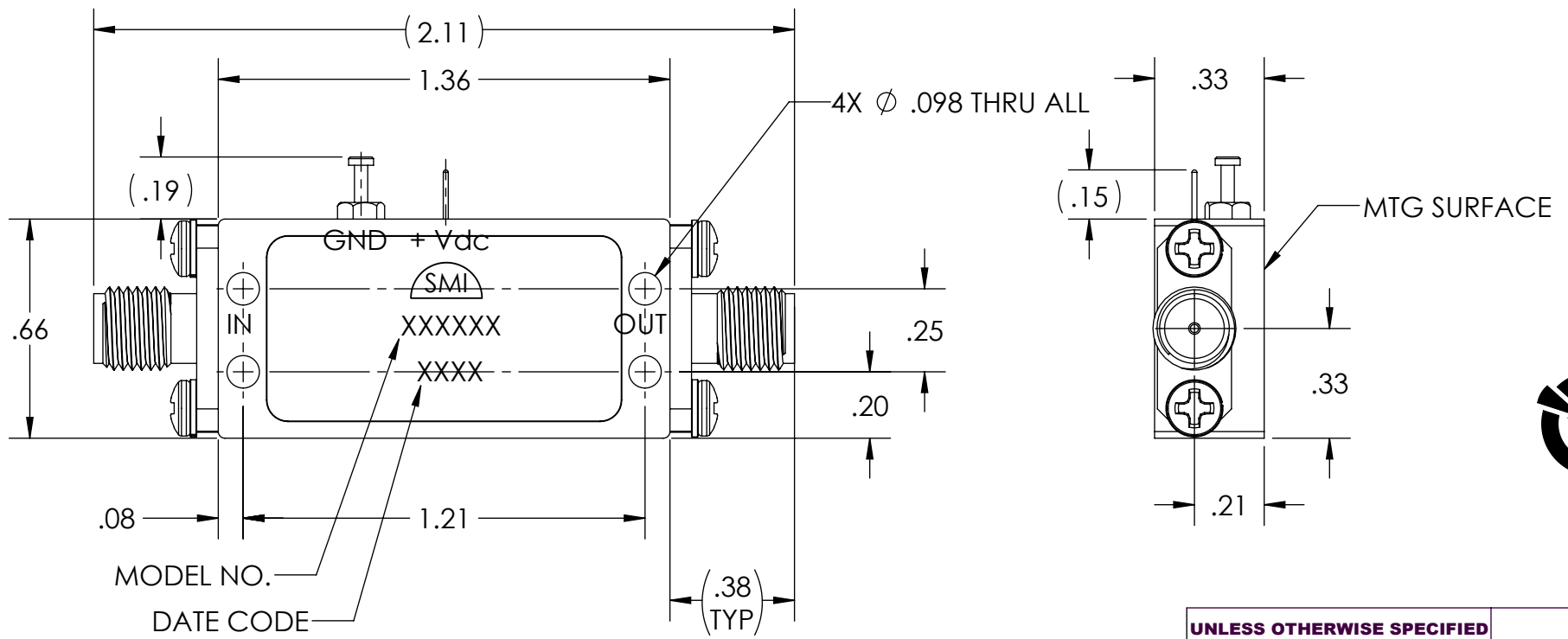
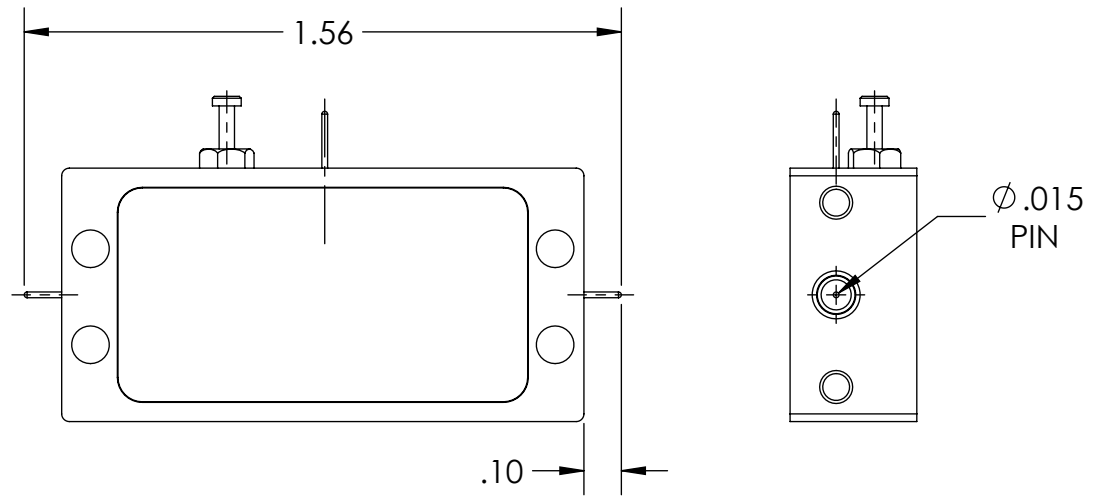
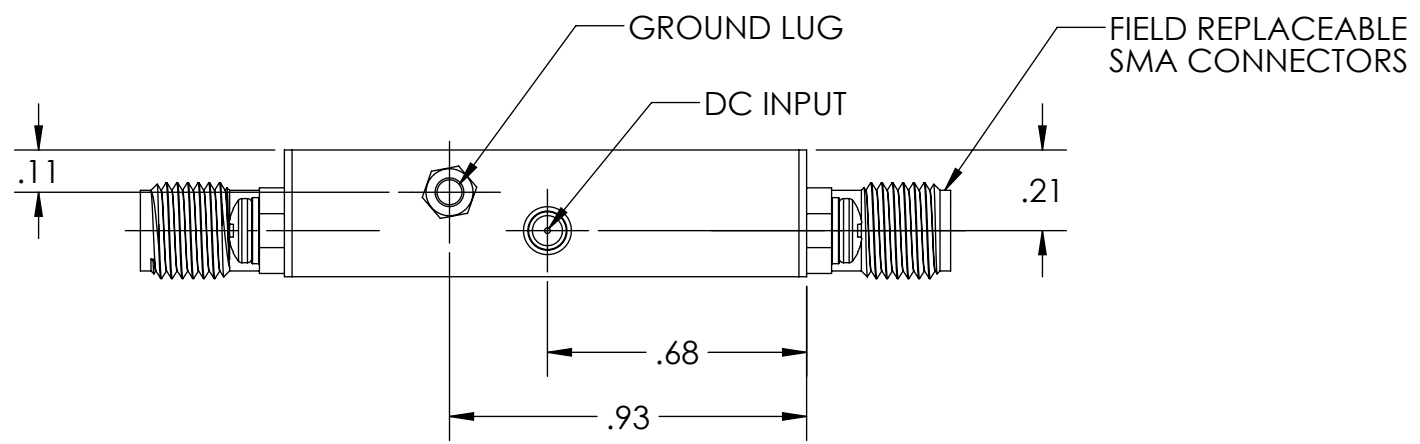
Spectrum Microwave · 2144 Franklin Drive N.E. · Palm Bay, Florida 32905 · PH (888) 553-7531 · Fax (888) 553-7532

www.SpectrumMicrowave.com Spectrum Microwave · 2707 Black Lake Place · Philadelphia, Pa. 19154 · PH (215) 464-4000 · Fax (215) 464-4001

REVISIONS				
ECN	REV.	DESCRIPTION	CHNG/DATE	APPVD/DATE
XXX	P1	PRELIMINARY RELEASE	2013-06-24	

NOTES:

- 1. HOUSING: 70/30 CN/NI ELECTRONIC GRADE



WITHOUT SMA CONNECTOR

CAUTION



THIS ASSEMBLY CONTAINS PARTS SENSITIVE TO DAMAGE BY ELECTROSTATIC DISCHARGE (ESD). USE ESD PRECAUTIONARY PROCEDURES WHEN TOUCHING, REMOVING OR INSERTING

SEE SEPARATE PARTS LIST IN ELECTRONIC STORAGE

MODEL NO. _____
DATE CODE _____

SPECTRUM MICROWAVE PROPRIETARY INFORMATION
THIS DOCUMENT IS THE SOLE PROPERTY OF SPECTRUM MICROWAVE, INC. THE RELEASE OF DATA CONTAINED IN THIS DOCUMENT AND THE REPRODUCTION OF THIS DOCUMENT, IN WHOLE OR IN PART, WITHOUT THE WRITTEN PERMISSION OF SPECTRUM MICROWAVE, INC ARE PROHIBITED.

<p>UNLESS OTHERWISE SPECIFIED</p> <p>* INTERPRET DRAWING IAW ASME Y14.100-2004 * DIMENSIONING AND TOLERANCING IAW ASME Y14.5-1994 * PARENTHETICAL INFORMATION FOR REFERENCE ONLY * DIMENSIONAL LIMITS APPLY BEFORE PROCESSES * DIMENSIONS ARE IN INCHES * TOLERANCES ARE: ANGLES ±1.0° * SURFACE FINISH: 63 * REMOVE ALL BURRS AND SHARP EDGES .010 RAD MAX. * CONCENTRICITY MACHINED DIA: .002 FIM * MACHINED TOOL MISMATCH: .002 MAX.</p>	3rd ANGLE PROJECTION	
	ANSI	
	DRAWN WAR	DATE 2013-06-24
	CHECKED	
	ENGRG HP	2013-06-24
MFG		
QA		

<p>SPECTRUM MICROWAVE, INC 2707 Black Lake Place Philadelphia, PA 19154-1008 (USA)</p>			
TITLE			
OUTLINE, H2L			
SIZE B	CAGE CODE 60979	DWG NO. 088-00387	REV P1
SCALE: 2:1	SHEET		1 OF 1