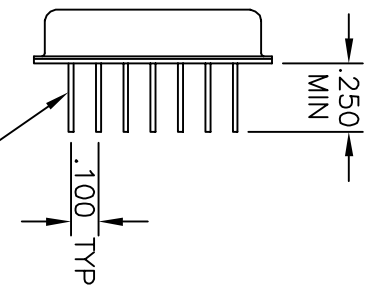
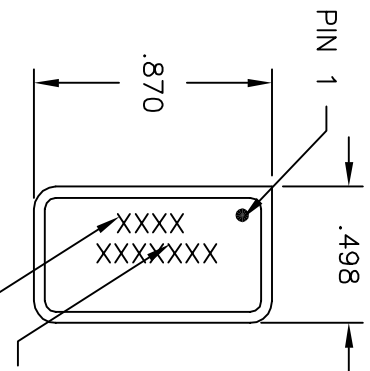


OTL2310XXXX

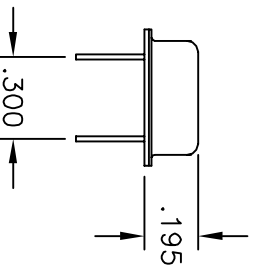
REVISIONS

| LTR | DESCRIPTION | DATE | APPROVED |
|-----|--------------------|---------|----------|
| --- | ECN 10991, RELEASE | 9/29/01 | |
| | | | |
| | | | |



| PIN | DESCRIPTION |
|------------|-------------|
| 1 | RF1 |
| 2,4,6,8-10 | GND |
| 12 - 14 | +15V |
| 3 | CTL |
| 5 | RF2 |
| 7 | RF COM |
| 11 | RF COM |

USE WITH: HDR 41000014, CAN 41100004



CAUTION
 THIS ASSEMBLY CONTAINS PARTS SENSITIVE TO DAMAGE BY ELECTRO-STATIC DISCHARGE (ESD). USE ESD PRECAUTIONARY PROCEDURES WHEN TOUCHING, REMOVING OR INSERTING.

| | | | | |
|------------------------|----------------------------|------------|--------------|------------|
| MATERIAL: | DRAWN | ADAM SIDLE | 9/29/01 | DATE |
| FINISH | CHECKED | | | DATE |
| DIMENSIONS: INCHES | ENGINEERING | | | DATE |
| MANUFACTURING | QUALITY | | | DATE |
| TOLERANCE: .XX +/- .01 | CODE IDENT NO. | 60979 | OTL 2310XXXX | |
| DEC: .XXX +/- .005 | K:\ENGINEER\ACTWIN\OUT\DP3 | | | SHT 1 OF 1 |

SECTRA
 PHILADELPHIA OPERATIONS
 2707 BLACK LANE PLACE
 PHILADELPHIA, PA 19154 (USA)

OUTLINE DRAWING
 DP3(DIP)