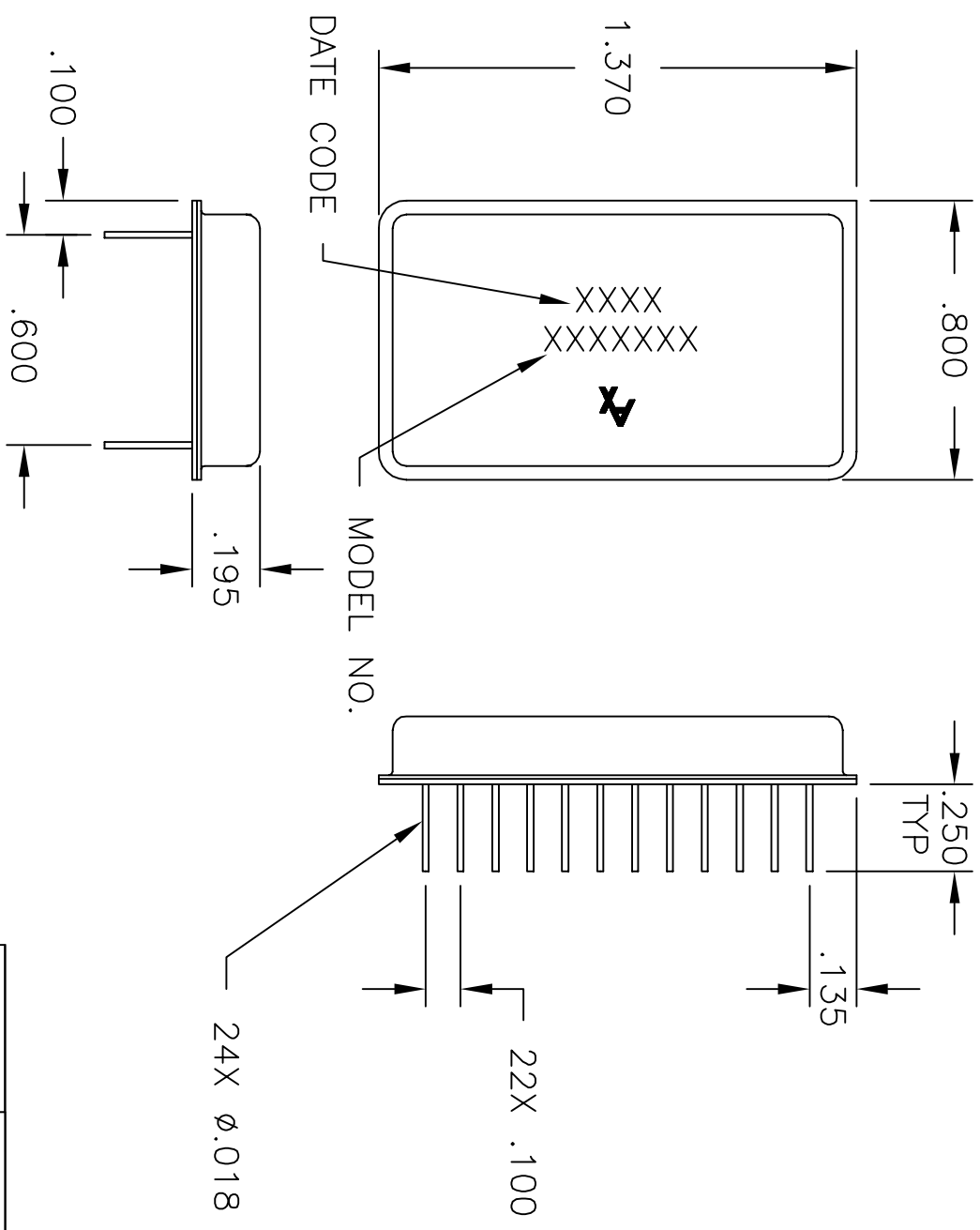


OTL2310XXXX

REVISIONS

LTR	DESCRIPTION	DATE	APPROVED
--	EON 10991, RELEASE	9/29/01	



CAUTION

THIS ASSEMBLY CONTAINS PARTS SENSITIVE TO DAMAGE BY ELECTRO-STATIC DISCHARGE (ESD). USE ESD PRECAUTIONARY PROCEDURES WHEN TOUCHING, REMOVING OR INSERTING.



MATERIAL:	DRAWN ADAM SIDLE	DATE 9/20/01	<p>PHILADELPHIA OPERATIONS 2707 BLACK LAKE PLACE PHILADELPHIA PA 19154 (USA)</p>
FINISH	CHECKED	DATE	
DIMENSIONS: INCHES	ENGINEERING	DATE	<p>OUTLINE DRAWING DP5(DIP)</p>
TOLERANCE	MANUFACTURING	DATE	
DEC. .XX +/- .01	QUALITY	DATE	
ANG .X DEG			<p>CODE IDENT NO. 60979</p> <p>K:\ENGINEER\AQLTWIN\OLT\DP5</p>