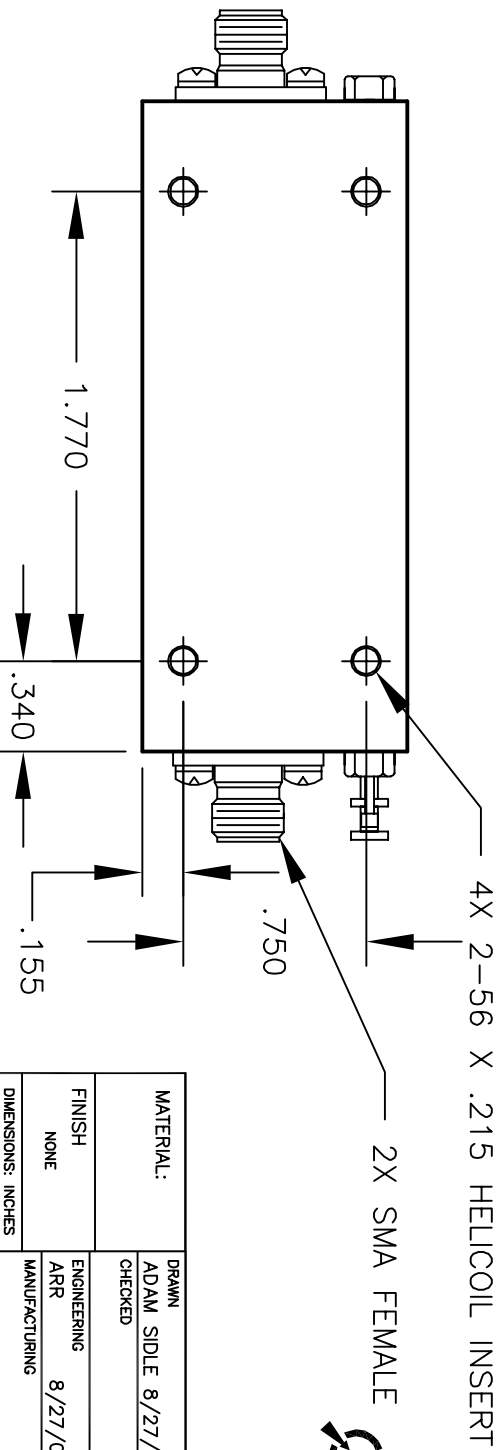
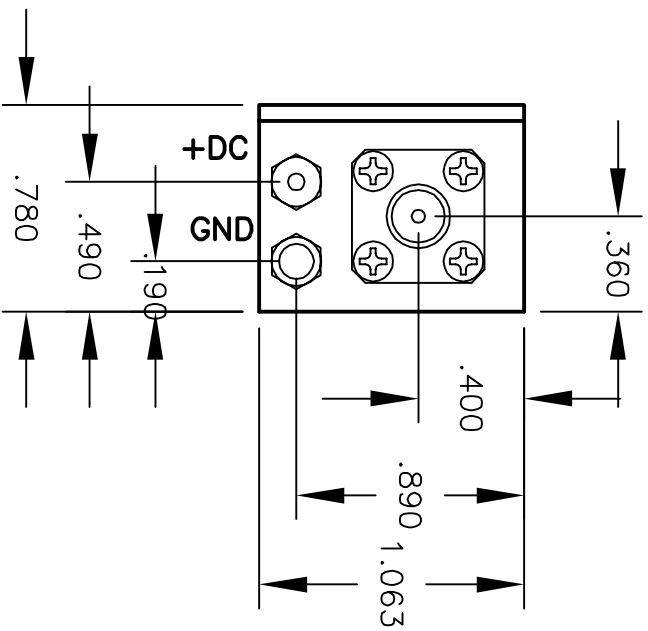
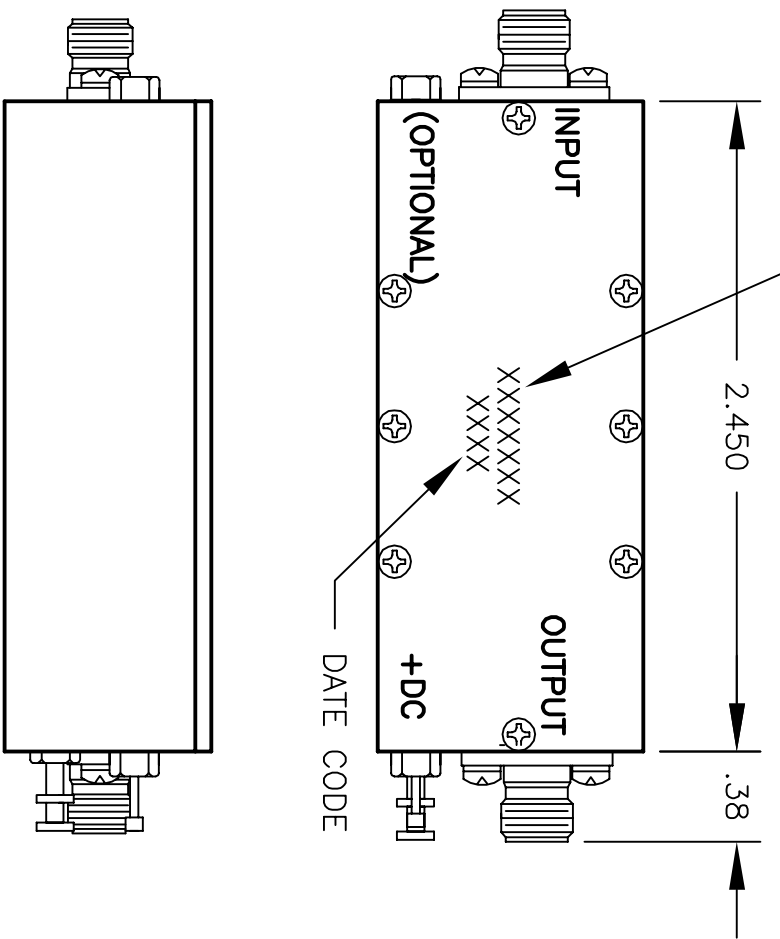


MODEL NO. _____

OTL2310XXXX

REVISIONS

LTR	DESCRIPTION	DATE	APPROVED
--	EON 11XXX, RELEASE	8/27/03	RA 8/27/03



CAUTION
 THIS ASSEMBLY CONTAINS PARTS SENSITIVE TO DAMAGE BY ELECTRO-STATIC DISCHARGE (ESD). USE ESD PRECAUTIONARY PROCEDURES WHEN TOUCHING, REMOVING OR INSERTING.

MATERIAL:	DRAWN	DATE
FINISH	CHECKED	DATE
DIMENSIONS: INCHES	ENGINEERING	DATE
TOLERANCE	ARR	DATE
DEC. .XX +/- .01	MANUFACTURING	DATE
ANG .X DEG	QUALITY	DATE
	RA	8/27/02

2707 BLACK LAKE PLACE, PHILADELPHIA PA. 19154	
OUTLINE DRAWING	
H-4	
CODE IDENT NO.	60979
OTL 2310XXXX	
K:\ENGINEER\ACLTWIN\OLT\OTL_H4	SHT 1 OF 1