

4

3

DWG NO.

088-00426

SH

1 OF 1

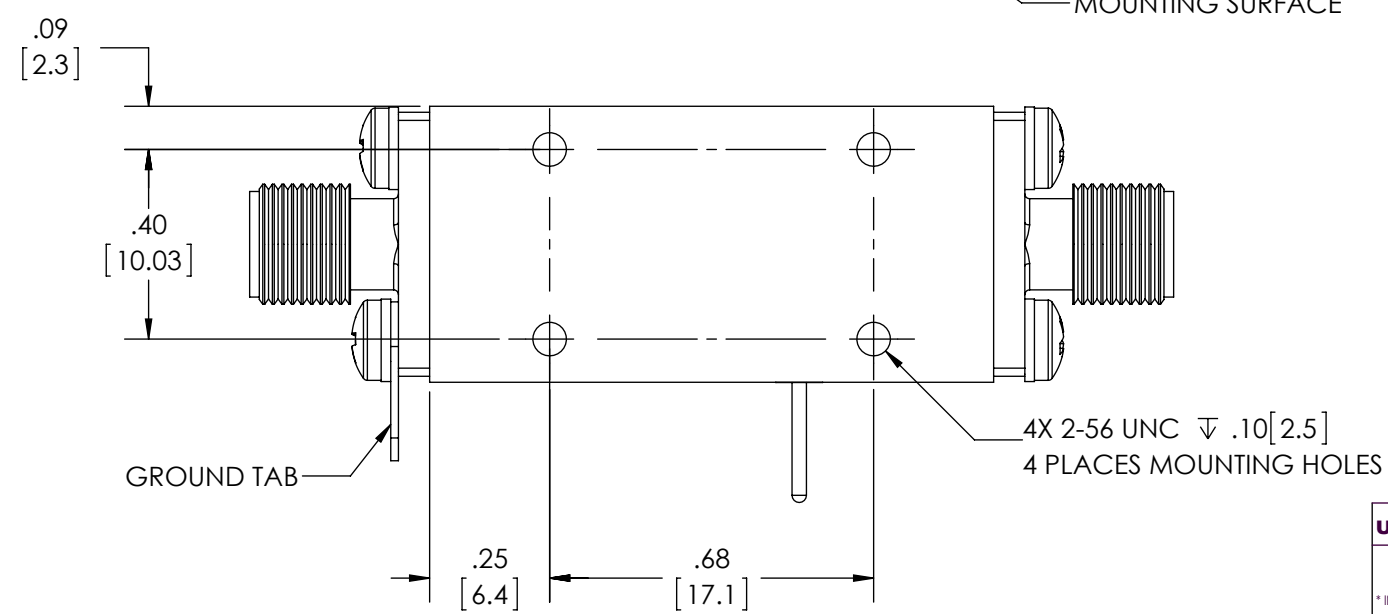
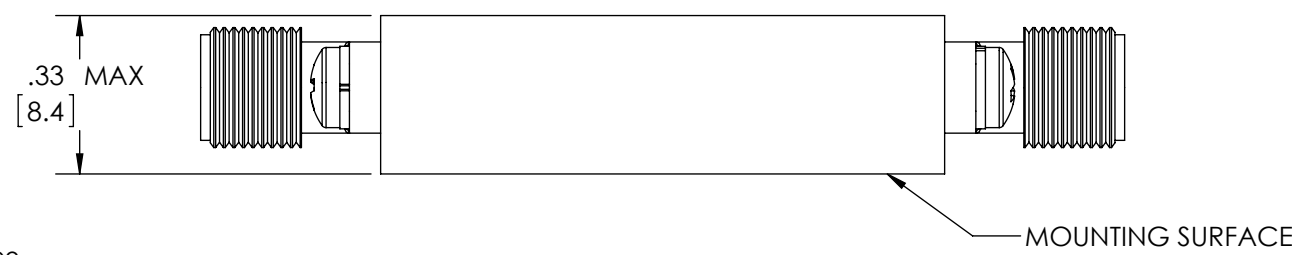
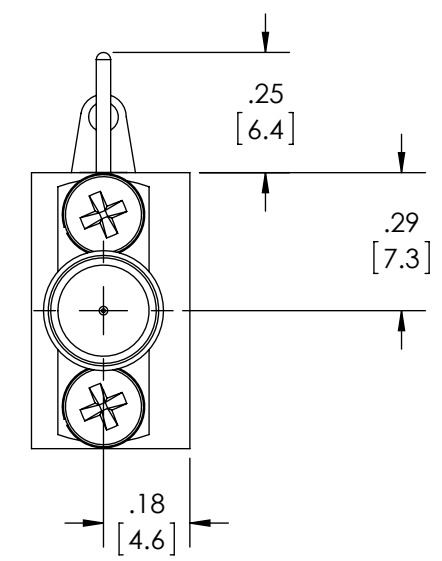
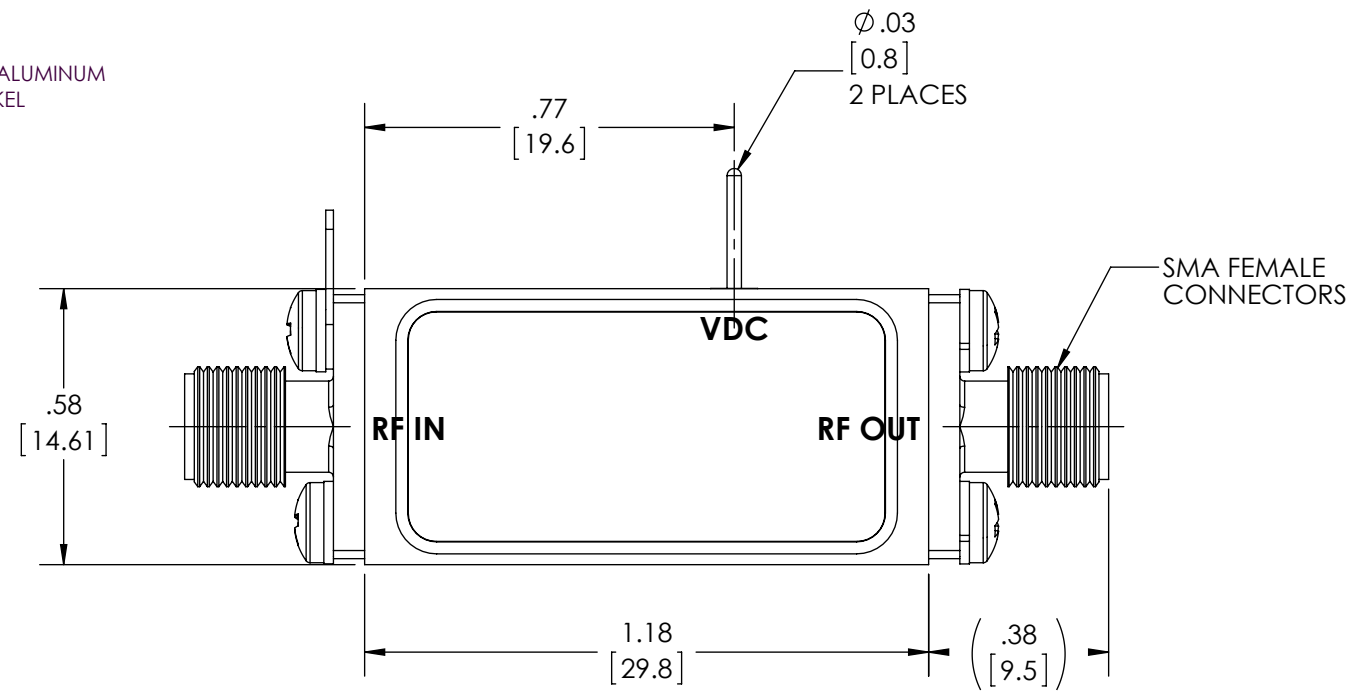
REV

-

1

NOTES:
 1. MATERIAL: ALUMINUM
 2. FINISH: NICKEL

REVISIONS				
ECN	REV.	DESCRIPTION	CHNG/DATE	APPVD/DATE
-	-	ENGINEERING RELEASE	2014/07/17	X



CAUTION

THIS ASSEMBLY CONTAINS PARTS SENSITIVE TO DAMAGE BY ELECTROSTATIC DISCHARGE (ESD). USE ESD PRECAUTIONARY PROCEDURES WHEN TOUCHING, REMOVING OR INSERTING

ADD -U AFTER DRAWING NUMBER TO FORM COMPLETE PART NUMBER FOR UNPLATED PART

UNLESS OTHERWISE SPECIFIED		3rd ANGLE PROJECTION	
* INTERPRET DRAWING IAW ASME Y14.100-2004		ANSI	
* DIMENSIONING AND TOLERANCING IAW ASME Y14.5-1994		DRAWN	DATE
* PARENTHETICAL INFORMATION FOR REFERENCE ONLY		WAR	2014/07/17
* DIMENSIONAL LIMITS APPLY BEFORE PROCESSES		CHECKED	
* DIMENSIONS ARE IN INCHES		ENGRG	
* TOLERANCES ARE: ANGLES ±1.0° 2 PLACE DECIMAL ±.02		HP	2014/07/17
* SURFACE FINISH 63/3 PLACE DECIMAL ±.005		MFG	
* REMOVE ALL BURRS AND SHARP EDGES .010 RAD MAX.		QA	
* CONCENTRICITY MACHINED DIA: .002 FIM		APPROVED	
* MACHINED TOOL MISMATCH: .002 MAX.		-	-

api technologies corp.		PHILADELPHIA OPERATIONS 2707 BLACK LAKE PLACE, PHILADELPHIA PA. 19154 (USA)	
TITLE			
OUTLINE, HCP2			
SIZE	CAGE CODE	DWG NO.	REV
B	60979	088-00426	-
SCALE:	SHEET		
2.5:1	1 OF 1		

API TECHNOLOGIES CORP. PROPRIETARY INFORMATION
 THIS DOCUMENT IS THE SOLE PROPERTY OF API TECHNOLOGIES CORP. THE RELEASE OF DATA CONTAINED IN THIS DOCUMENT AND THE REPRODUCTION OF THIS DOCUMENT, IN WHOLE OR IN PART, WITHOUT THE WRITTEN PERMISSION OF API TECHNOLOGIES CORP. ARE PROHIBITED.

4

3

2

1