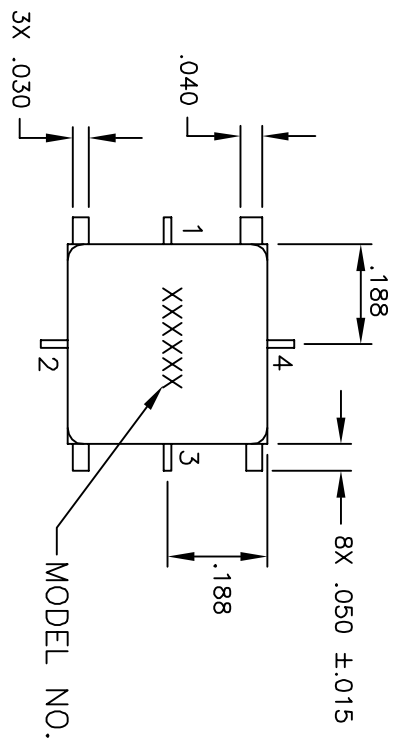


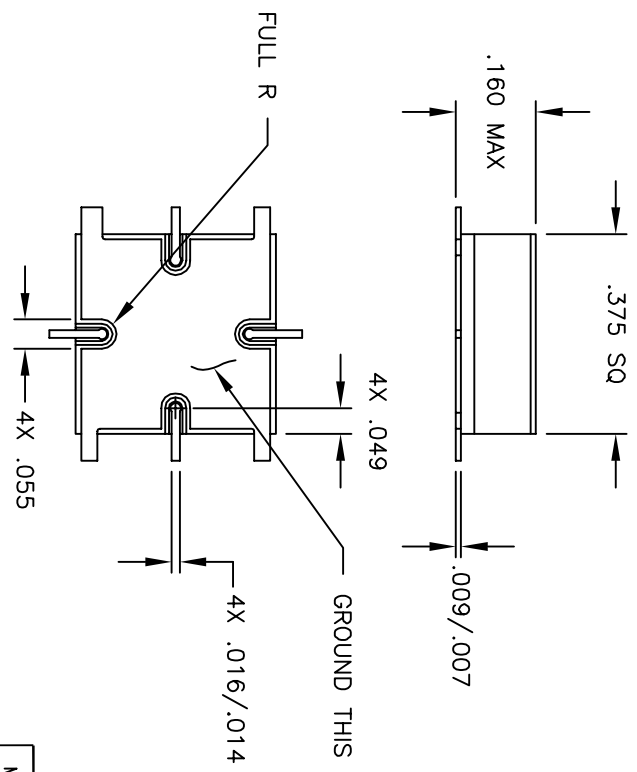
OTL29200011

REVISIONS

LTR	DESCRIPTION	DATE	APPROVED
-	ECN 10186, RELEASE	6/2/00	KT 6/2/00



PIN 1 - INPUT
 PIN 2 - GROUND (AMPLIFIERS)
 CONTROL VOLTAGE (ATTENUATORS)
 PIN 3 - OUTPUT
 PIN 4 - +DC



MATERIAL:
 WALLS/BASE - CERAMIC/KOVAR
 LEADS - KOVAR
 LID - KOVAR

FINISH:
 WALLS/BASE - GOLD/NICKEL PLATING
 LEADS - GOLD/NICKEL PLATING
 LID - NICKEL PLATING

MATERIAL: SEE ABOVE	DRAWN ADAM SIDLE	DATE 4/17/02	2707 BLACK LAKE PLACE, PHILADELPHIA PA. 19154	
FINISH: SEE ABOVE	CHECKED	DATE	OUTLINE DRAWING SM11	
DIMENSIONS: INCHES	ENGINEERING ARR	DATE 6/2/00		
TOLERANCE	MANUFACTURING	DATE		
DEC. .XX +/- .01 .XXX +/- .002	QUALITY KT	DATE 6/2/00	CODE IDENT NO. 60979	OTL 29200011
ANG .X +/- .3'			K:\ENGINEER\ACLTWIN\OTL\29200011	SHT 1 OF 1

CAUTION
 THIS ASSEMBLY CONTAINS PARTS SENSITIVE TO DAMAGE BY ELECTRO-STATIC DISCHARGE (ESD). USE ESD PRECAUTIONARY PROCEDURES WHEN TOUCHING, REMOVING OR INSERTING.

