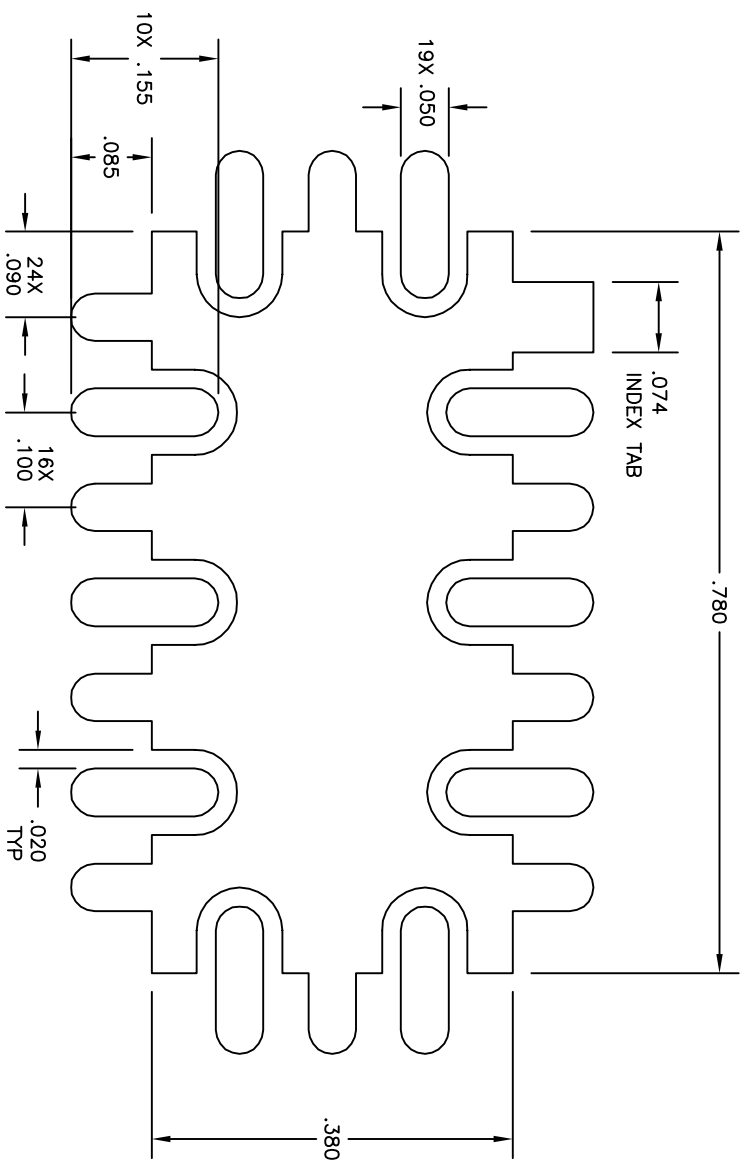
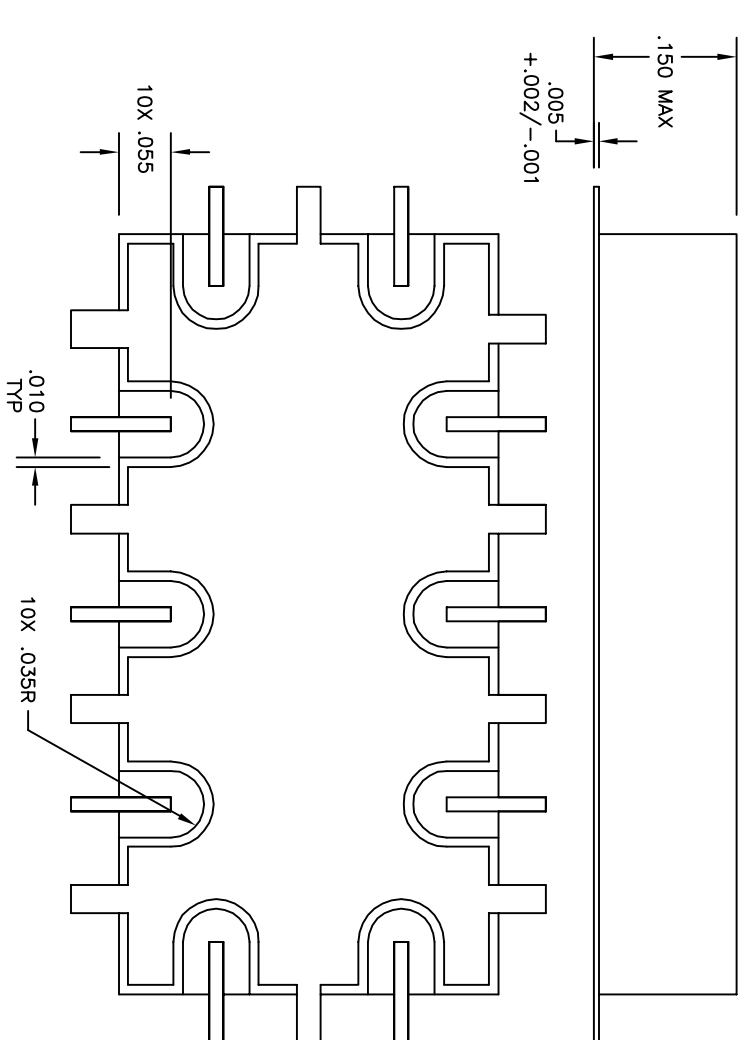
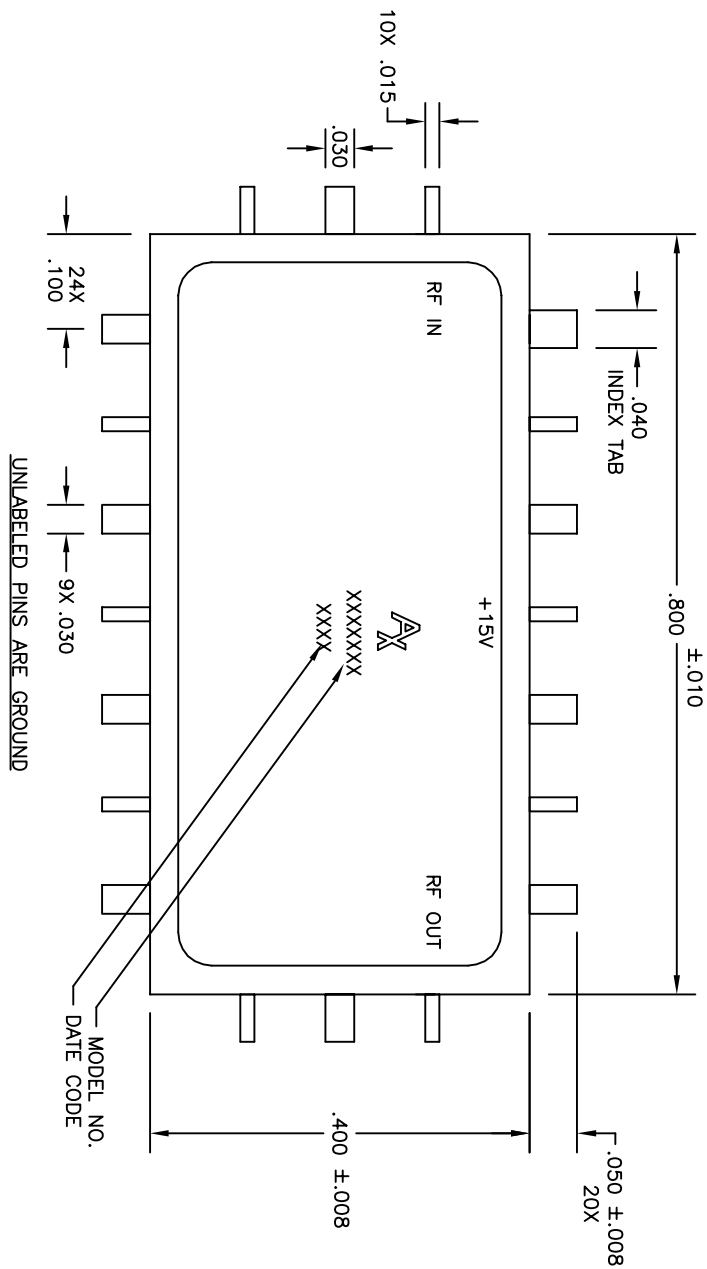


OTL 29200008

REVISIONS

LTR	DESCRIPTION	DATE	APPROVED
-	ECN 10897, RELEASE	8/10/01	
A	ECN 13009, ADDED RECOMMENDED FOOTPRINT	6/23/04	



RECOMMENDED FOOT PRINT PATTERN

CAUTION
 THIS ASSEMBLY CONTAINS PARTS SENSITIVE TO DAMAGE BY ELECTRO-STATIC DISCHARGE (ESD). USE ESD PRECAUTIONARY PROCEDURES WHEN TOUCHING, REMOVING OR INSERTING.

MATERIAL:	ADAM SIDLE 8/10/01	DATE	PHILADELPHIA OPERATIONS 2707 BLACK LANE PLACE PHILADELPHIA PA 19154 (USA)
FINISH:	CHECKED	DATE	
DIMENSIONS: INCHES	ENGINEERING	DATE	
TOLERANCE	MANUFACTURING	DATE	
DEC. .XX +/- .01	QUALITY	DATE	
ANG .XXX +/- .002			
CODE IDENT NO.	60979	OTL 29200008	
K:\ENGINEER\ACLTWIN\OUT\SM_4 SHEET 1 OF 1			

OUTLINE DRAWING
SM-4 PACKAGE

