

4005 SERIES

FEATURES

- Designed to Meet MIL-E-5400 Class 3
- SMA Female Connectors per MIL-PRF-39012
- High Isolation Wilkinson Circuit Design

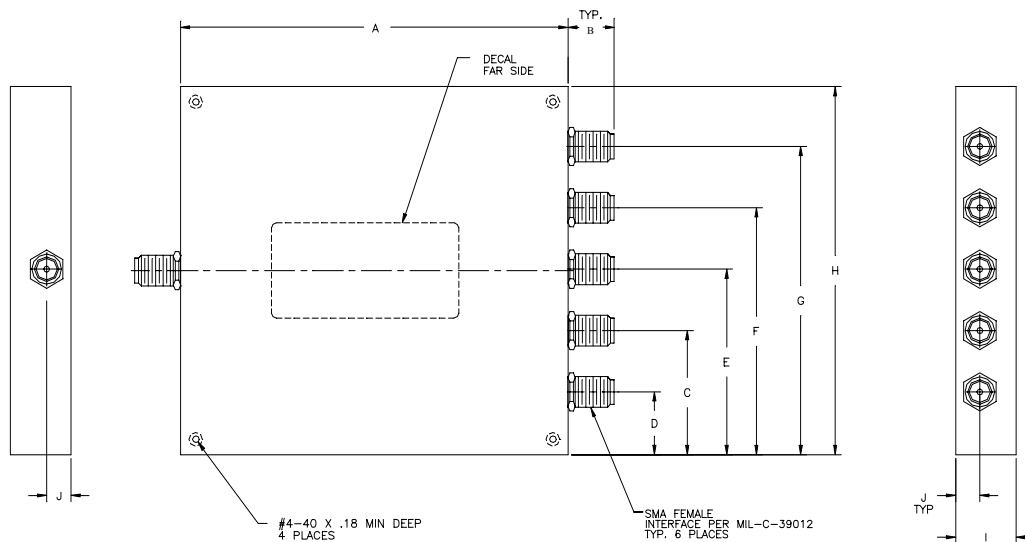
SPECIFICATIONS

Frequency Range GHz	Insertion Loss max (dB)	VSWR max Input/Output	Isolation min (dB)	Amplitude Unbalance max (dB)	Phase Unbalance ² max (Degrees)	Average Power ¹ (W) @ 1 GHz	Model
1-2	0.6	1.50/1.50	14	0.5	4	20	4125
2-4	0.6	1.60/1.60	14	0.5	6	20	4135
4-8	0.7	1.70/1.70	14	0.6	8	20	4145

NOTES:

1. Input power with 1.5 max output load VSWR. Power handling is reduced when used as a combiner. Consult factory.
2. To equalize the phase at all five ports, add an additional external line length to J3 and J5 equivalent to 1.2 cm of air line, and add a line length to J4 equivalent to 2.2 cm of air line.

OUTLINE DRAWING



Model	A"	B"	C"	D"	E"	F"	G"	H"	I"	J"
4135	3.20	.38	1.00	0.50	1.50	2.00	2.50	3.00	.50	.20
4145	2.25	.38	1.00	0.50	1.50	2.00	2.50	3.00	.50	.20

Model	A (cm)	B (cm)	C (cm)	D (cm)	E (cm)	F (cm)	G (cm)	H (cm)	I (cm)	J (cm)
4135	(8,13)	(0,97)	(2,54)	(1,27)	(3,81)	(5,08)	(6,35)	(7,62)	(1,27)	(0,51)
4145	(5,72)	(0,97)	(2,54)	(1,27)	(3,81)	(5,08)	(6,35)	(7,62)	(1,27)	(0,51)

MISCELLANEOUS:

1. Spectrum Microwave "Standard Warranty and Order Terms and Conditions" apply to all orders.
2. All specifications subject to change without notice.
3. Check "Ordering and Availability Listing" for delivery and ordering information.
4. Contact our local Manufacturers Representative for pricing.

Specification Revision - 071910

