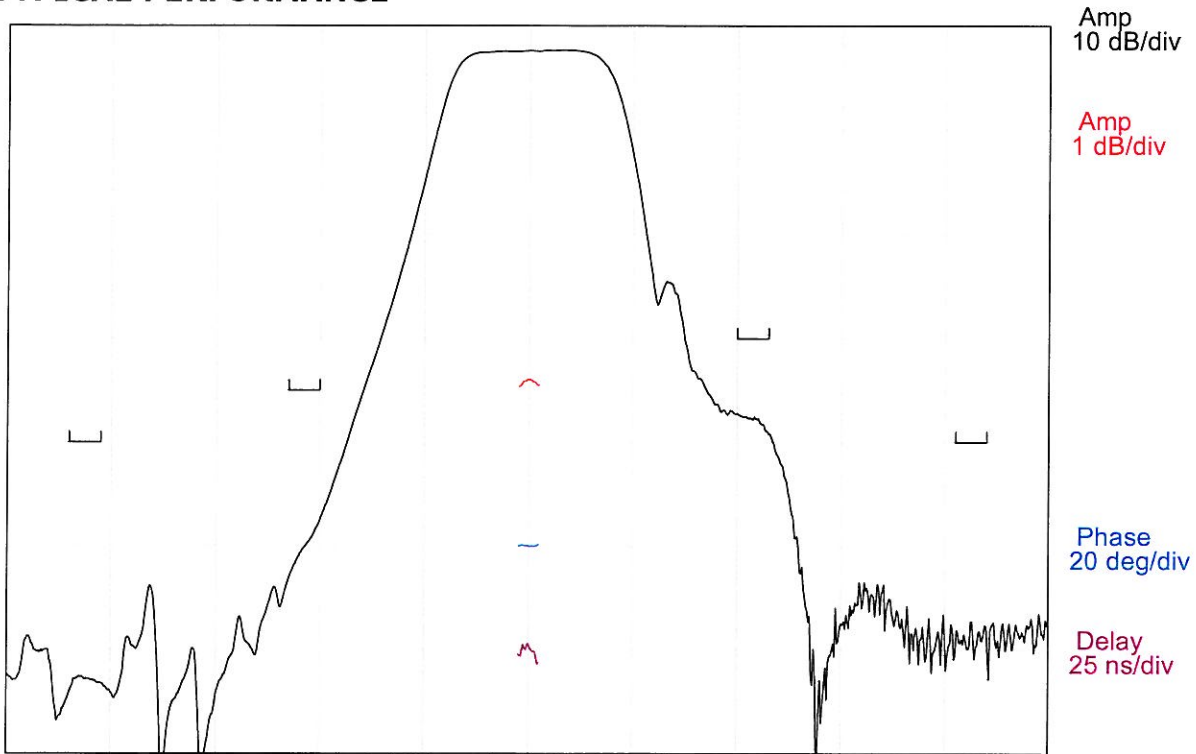


**DESCRIPTION**

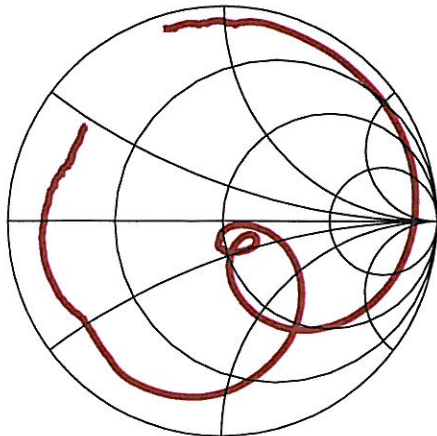
- 869 MHz SAW bandpass filter with 2 MHz bandwidth.
- 3.8 x 3.8 mm ceramic SMP, 6 pads.
- RoHS compliant.

**TYPICAL PERFORMANCE**

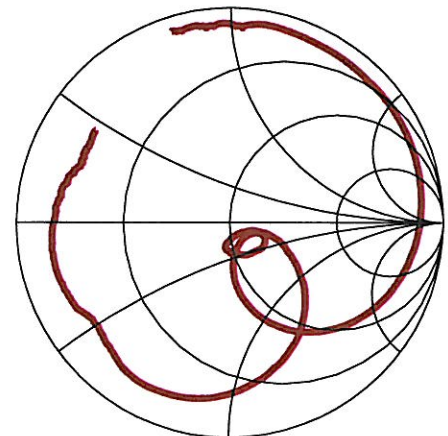


Center = 869 MHz, 10 MHz/div (125 kHz incr)

**S11 (819-919 MHz)**



**S22 (819-919 MHz)**



## SPECIFICATION

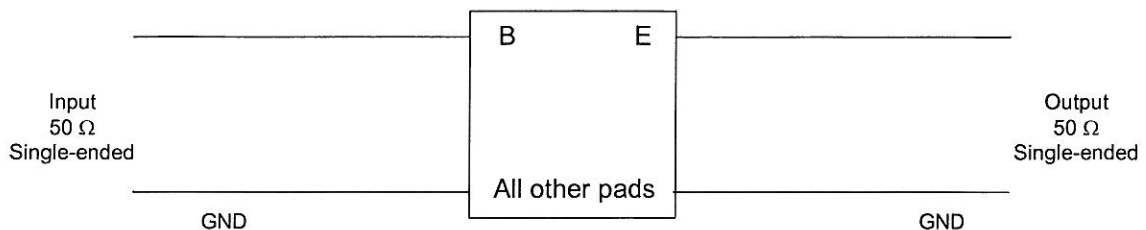
Parameter	Min	Typ	Max	Units
Center Frequency, $F_c$ <sup>1</sup>	-	869	-	MHz
Insertion Loss ( $F_c \pm 1$ MHz)	-	2.6	4.5	dB
Amplitude Ripple ( $F_c \pm 1$ MHz)	-	0.4	1.5	dB p-p
Absolute Attenuation (referenced to 0 dB)				
Attenuation (825 to 828 MHz)	40	47	-	dB
Attenuation (846 to 849 MHz)	35	40	-	dB
Attenuation (889 to 892 MHz)	30	36	-	dB
Attenuation (910 to 913 MHz)	40	48	-	dB
Source/Load Impedance	50			ohms
Ambient Temperature	-	25	-	°C

Notes: 1. Defined as the average of the lower and upper 3 dB frequencies.

## MAXIMUM RATINGS

Parameter	Min	Max	Units
Storage Temperature Range	-30	85	°C
Operating Temperature Range	-10	60	°C
Input Power Level	-	0	dBm
DC Voltage	-	10	V

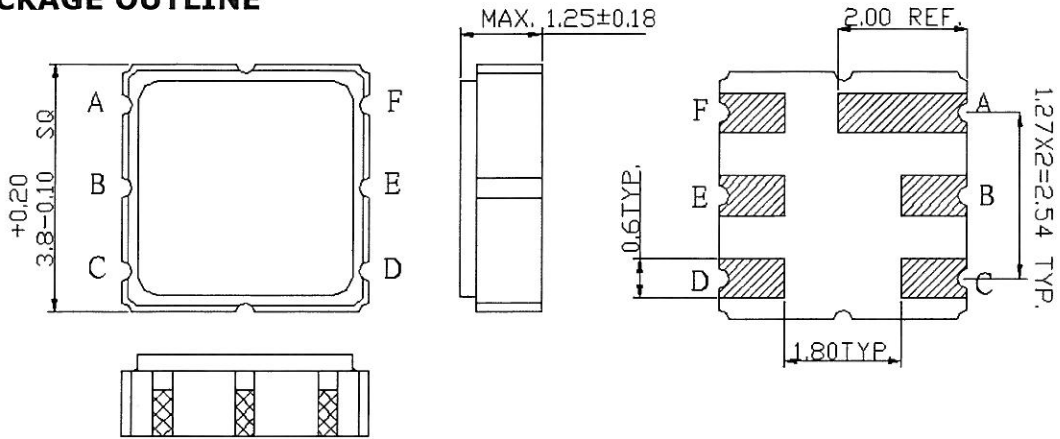
## MATCHING CIRCUIT



Notes:

- External matching components are not required.

**PACKAGE OUTLINE**



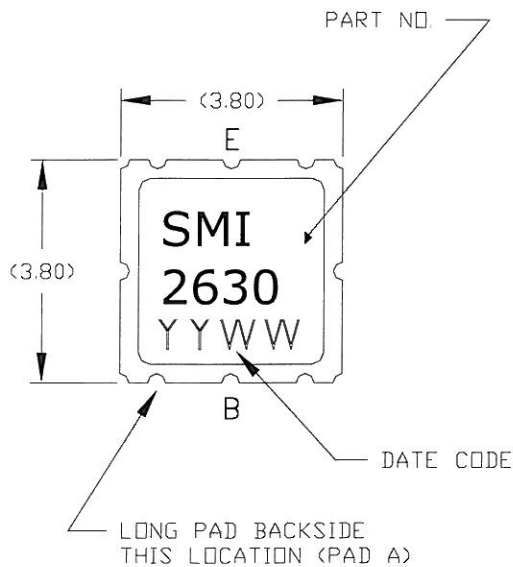
**Units:** mm

Tolerances are typically ± 0.15 mm except where indicated.

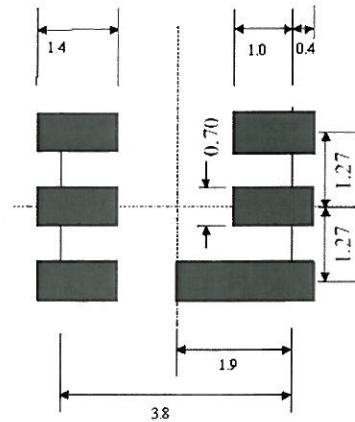
**Pad Configuration:**

Input: B  
 Output: E  
 To be grounded: all other pads

**MARKING**



**SUGGESTED FOOTPRINT**



All specifications are believed to be accurate and reliable. However, Spectrum Microwave reserves the right to make changes without notice. © 2011 All rights reserved.