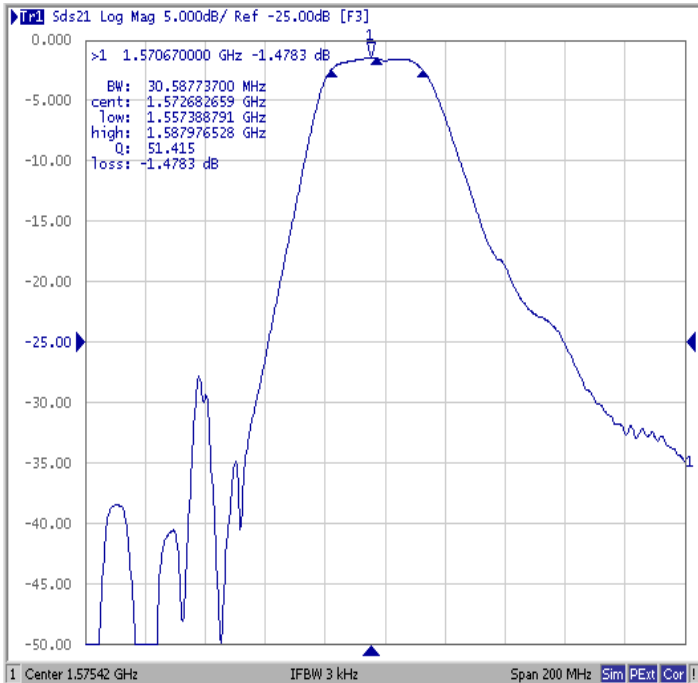


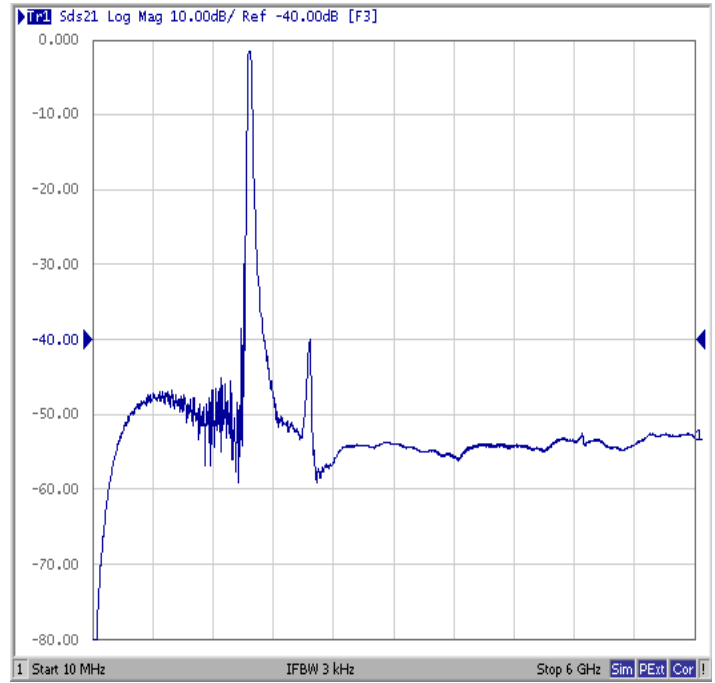
DESCRIPTION

- 1575.42 MHz SAW filter with nominal 35 MHz bandwidth.
- 1.4 x 1.1 mm LCC Package.
- RoHS compliant.

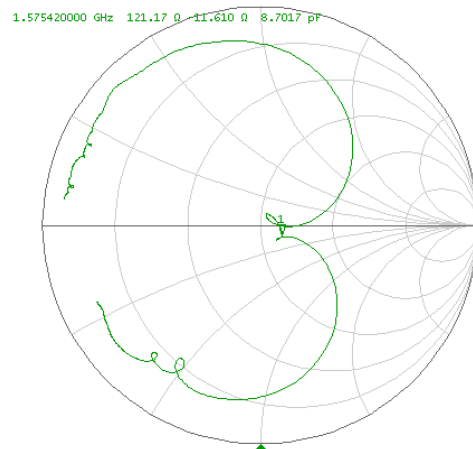
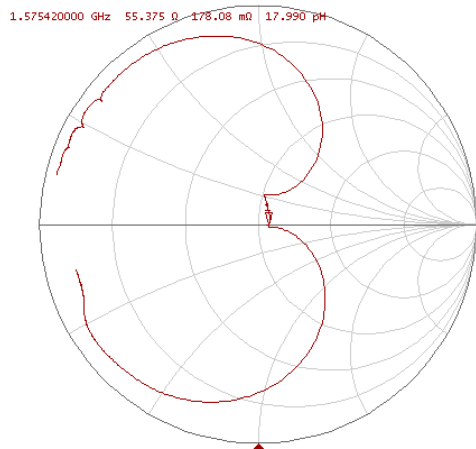
TYPICAL PERFORMANCE



S11 (1475.42-1675.42 MHz)



S22 (1475.42-1675.42 MHz)



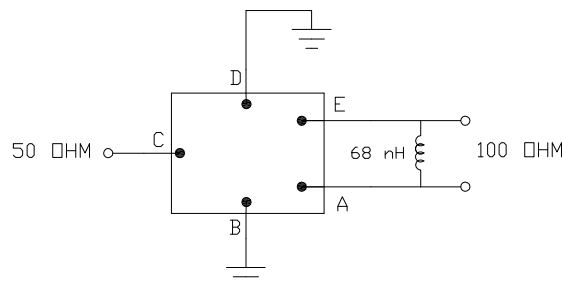
SPECIFICATION

Parameter	Min	Typ	Max	Units
Center Frequency (Fc)	-	1575.42	-	MHz
Maximum Insertion Loss (1574.42 to 1576.42MHz) (IL)	-	1.7	2.1	dB
Amplitude Ripple (1574.42 to 1576.42MHz)	-	0.3	1	dB
Nominal 1 dB Bandwidth (referenced to maximum loss)	-	35	-	MHz
VSWR (1574.42 to 1576.42MHz)	-	1.3	1.8	-
Attenuation				
100 to 960 MHz	40	46	-	dB
960 to 1425 MHz	35	46	-	dB
1425 to 1475 MHz	30	51	-	dB
1475 to 1515 MHz	20	30	-	dB
1515 to 1525 MHz	17	30	-	dB
1625 to 1635 MHz	12	22.5	-	dB
1635 to 1675 MHz	20	25	-	dB
1675 to 1750 MHz	30	35	-	dB
1750 to 1805 MHz	35	42	-	dB
1805 to 1980 MHz	40	47	-	dB
1980 to 2400 MHz	35	40	-	dB
2400 to 3155 MHz	40	52	-	dB
3155 to 6000 MHz	35	52	-	dB
Terminating Source Impedance (Single-Ended):	Zs = 50 ohm			
Terminating load Impedance (Differential):	ZL = 100 ohm // 68nH			

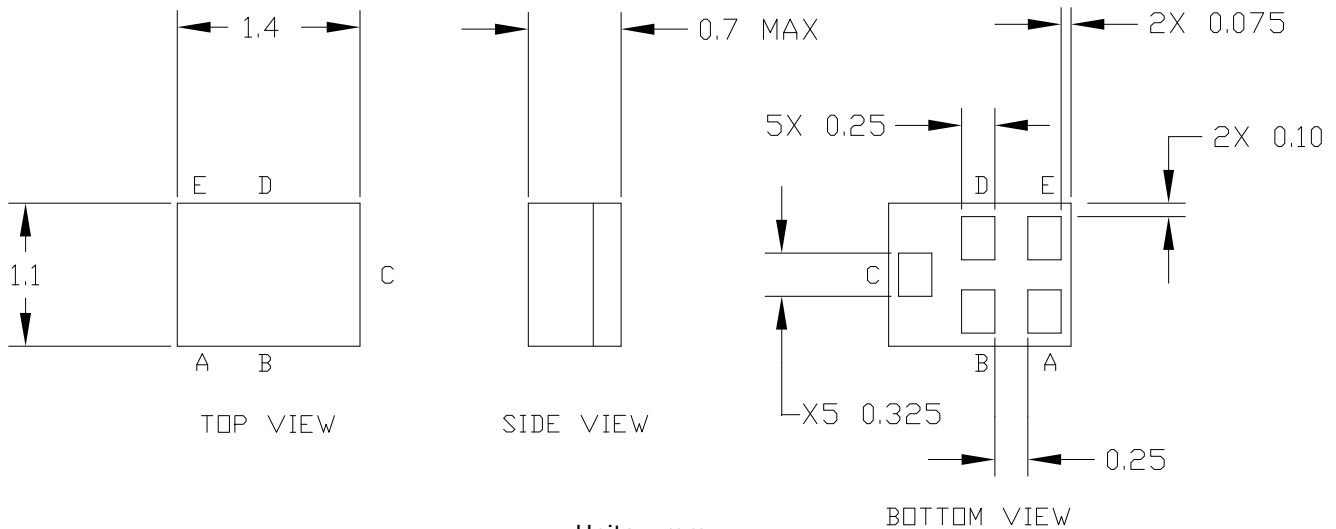
MAXIMUM RATINGS

Parameter	Min	Max	Units
Storage Temperature Range	-55	+95	°C
Operating Temperature	-40	+85	°C
Input Power Level	-	10	dBm
DC Voltage	-	3	V

MATCHING CIRCUIT



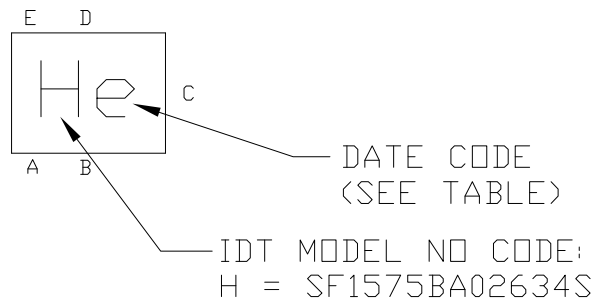
PACKAGE OUTLINE



Package Material:
 Body: Al_2O_3 ceramic
 Lid: Kovar, Ni plated
 Terminations: Au plating 1 μm min,
 over a 1.3-8.9 μm Ni plating

Units: mm
 Pad Configuration:
 Unbalanced Input:
 Balanced Output: A & E
 Ground: B & D

MARKING



		MONTH											
YEAR		1	2	3	4	5	6	7	8	9	10	11	12
2008		a	b	c	d	e	f	g	h	j	k	l	m
2009		n	p	q	r	s	t	u	v	w	x	y	z
2010		A	B	C	D	E	F	G	H	J	K	L	M
2011		N	P	Q	R	S	T	U	V	W	X	Y	Z
2012		a	b	c	d	e	f	g	h	j	k	l	m

**ISO 9001
Registered**

All specifications are believed to be accurate and reliable. However, Spectrum Microwave reserves the right to make changes without notice.
 © 2010 All rights reserved.